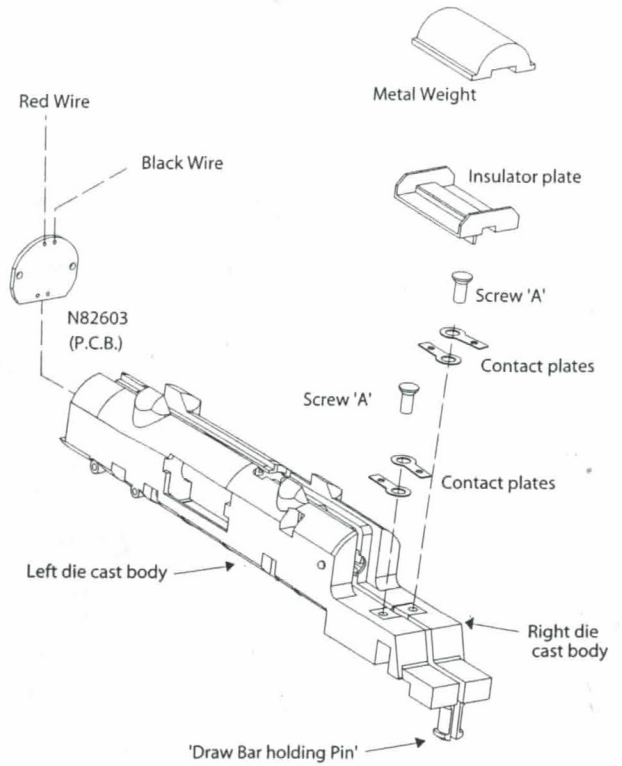
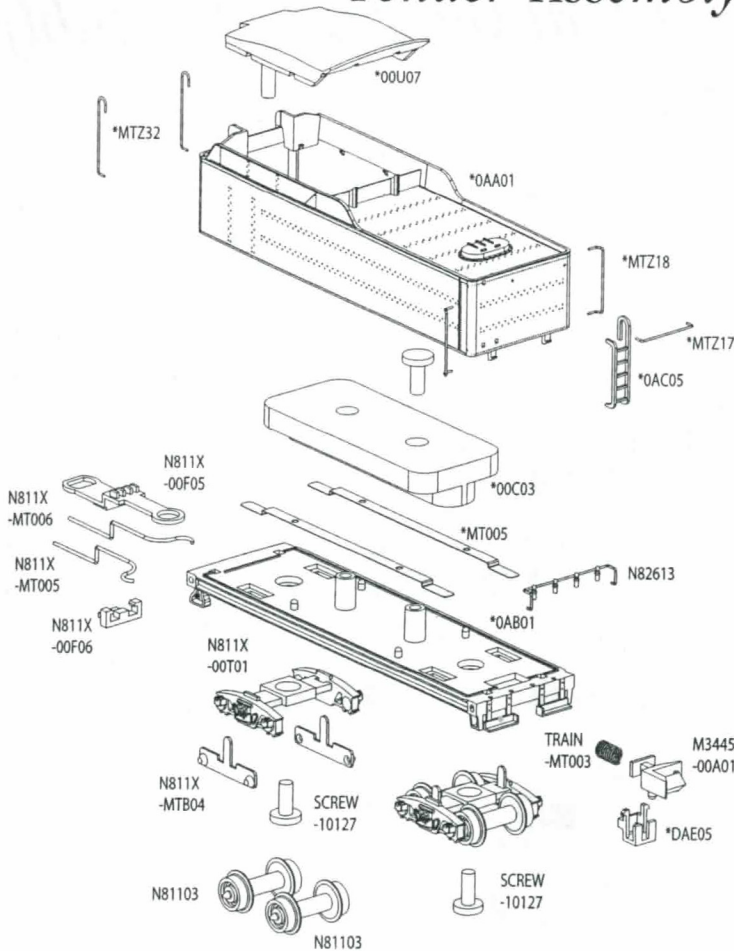


Tender Assembly



Sketch 'A'

Connecting Location:	Orange	Not connected	Left Die Cast Body (contact plate)	Brown	Red	Black	Right Die Cast Body (contact plate)
Decoder wires:	Orange (Motor +)	Yellow	Black	Grey (Motor -)	White	Blue	Red

Diagram 'A'

Decoder installation:

- 1.) Remove the tender from the locomotive by detaching the draw bar from the locomotive chassis.
- 2.) Put the locomotive upside down on your hand and holding the cabin firmly with your fingers. (Beware not to hold the other parts of the body shell too tight) Meanwhile, use the other hand to pull out the chassis by holding the 'draw bar holding pin'.
- 3.) Remove the metal weight and the insulator plate from the rear top end of the chassis.
- 4.) Remove the screws 'A' underneath the insulator plate and lift the motor and light contact plates.
- 5.) Cut the contact plates away from the motor and light wires and connect the wires directly to the decoder wires. (Match the color of wires according the diagram 'A' & sketch'A'.)
- 6.) Using screws 'A' to fix the left & right contact plates respectively on the left and right die cast body for connecting the decoder 'black' and 'red' wires.
- 7.) Fix the decoder into the space at the rear end of the chassis and insulate the decoder from the any metal surface.
- 8.) Put back the body shell and connect the tender.