



HO 4-6-4 HUDSON STEAM LOCOMOTIVE



INSTRUCTIONS

SMOKE UNIT

(Your locomotive's outer box and/or label will indicate if it is equipped with smoke).

Your locomotive MAY be equipped with a smoke generating feature. To operate your locomotive's smoke feature, put 3 or 4 drops of smoke (Item No. 00251) down the smokestack. PLEASE DO NOT add smoke to a locomotive that is not equipped with a smoke generating feature as this can damage the locomotive.

BREAK-IN PERIOD

Like any fine piece of machinery, your precision-engineered Bachmann train will work best after a few hours of actual running time. Do not run constantly at full speed. Frequent starts and stops and running at various speeds will ensure many years of trouble-free operation.

TROUBLE-SHOOTING TIPS

1. If your locomotive doesn't run, check the following:
 - Check that the power pack is plugged in.
 - Check that the track is wired and assembled properly.
 - Make sure all locomotive wheels are on the track.
2. For some styles of power packs, if your locomotive doesn't run but the headlight glows, you may not have your track connected to the DC terminals on the power pack. Be sure to make your track connections according to the power pack manufacturer's instructions.
3. Keep your track and the metal wheels of the locomotive clean with a recommended track cleaner (Item No. 99992). Dirt will cause your locomotive to run erratically. **DO NOT USE STEEL WOOL TO CLEAN YOUR TRACK!**

LUBRICATION AND MAINTENANCE

For the best care and maintenance of your motive power and rolling stock, we recommend lubricating metal-to-metal and other moving parts after every 24 hours of use. **Do not lubricate motors or electrical pick-ups with oil.** Bachmann offers a full line of premium-grade *E-Z Lube*® products. We recommend Bachmann's Light Gear Oil (Item No. 99984) for use on all gears, bearings, valve gear, and side rods. Our Heavy Gear Oil (Item No. 99983) lubricates for extended periods of time and should be used for larger locomotive gears only. For applications requiring heavier viscosity products, such as Large Scale trains, it is best to use heavy-duty Grease (Item No. 99982). And for superior electrical pick-up and contact maintenance and track cleaning, your choice is the Conductive Contact Lube (99981). Your local hobby dealer can also recommend other appropriate lubricants.

Proper lubrication is important BUT IT MUST NOT BE OVERDONE. Apply oil by dipping the end of a toothpick into the oil and applying just one drop where needed. Wipe off excessive oil. Too much lubrication can cause slipping drive wheels or even a short circuit.

LUBRICATE CAREFULLY. BE SURE LUBRICANT IS COMPATIBLE WITH PLASTIC. Check for any dirt or lint between the brush and armature and also between the pick-up strip and wheels, which can cause a "jerky" operation.

FOR SERVICE OR TO ORDER SPARE PARTS CONTACT...

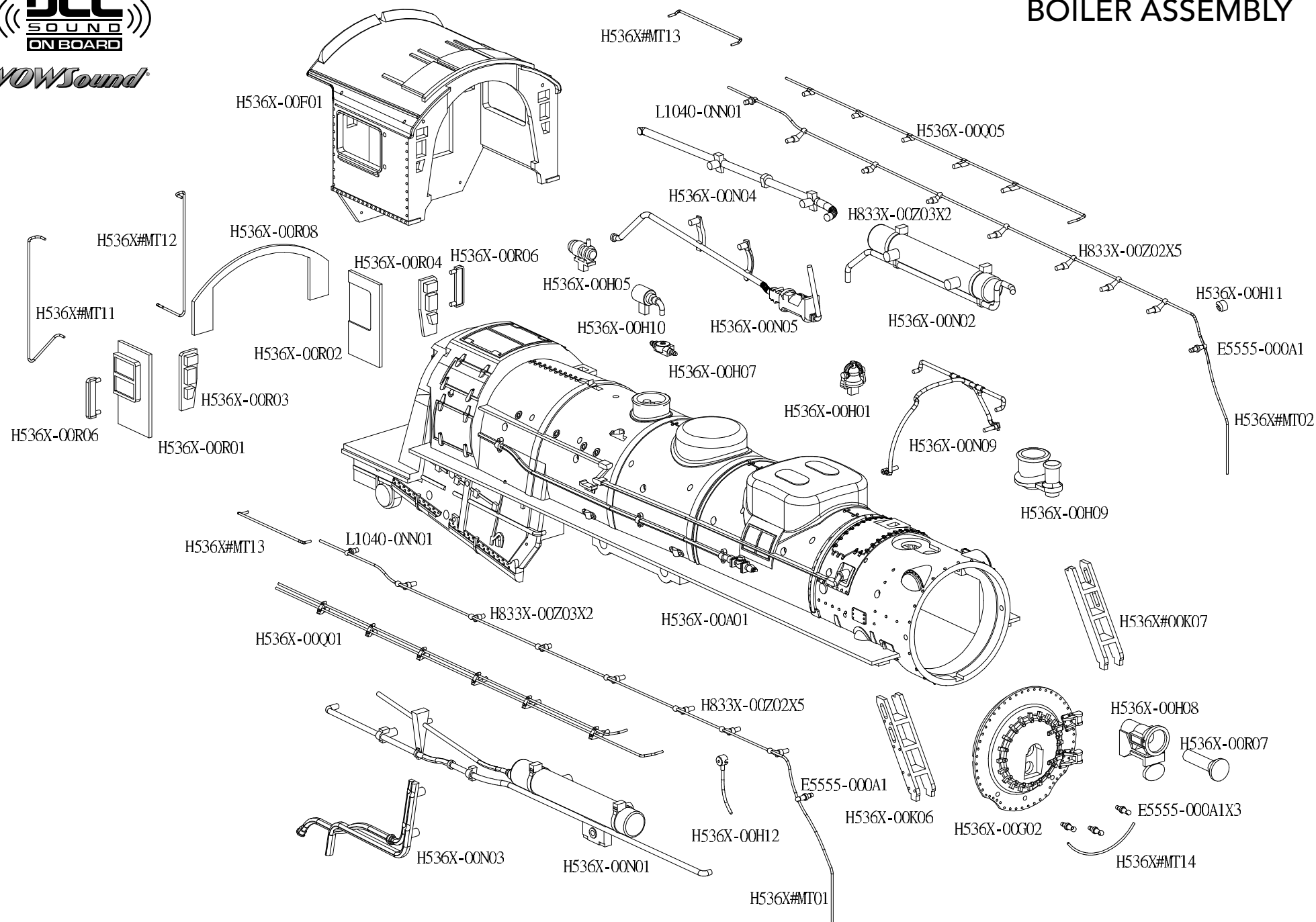
BACHMANN INDUSTRIES, INC.
1400 EAST ERIE AVENUE
PHILADELPHIA, PA 19124 USA
www.bachmanntrains.com

BACHMANN EUROPE PLC.
MOAT WAY, BARWELL
LEICESTERSHIRE LE9 8EY
UNITED KINGDOM
www.bachmann.co.uk

**BACHMANN TRADING
(SHANGHAI) LIMITED**
RM. 461/1-B XINHUA RED STAR PLAZA,
NO. 120 HONGJING ROAD,
MINHANG DISTRICT
SHANGHAI, CHINA
PC: 201103
www.bachmannchina.com.cn

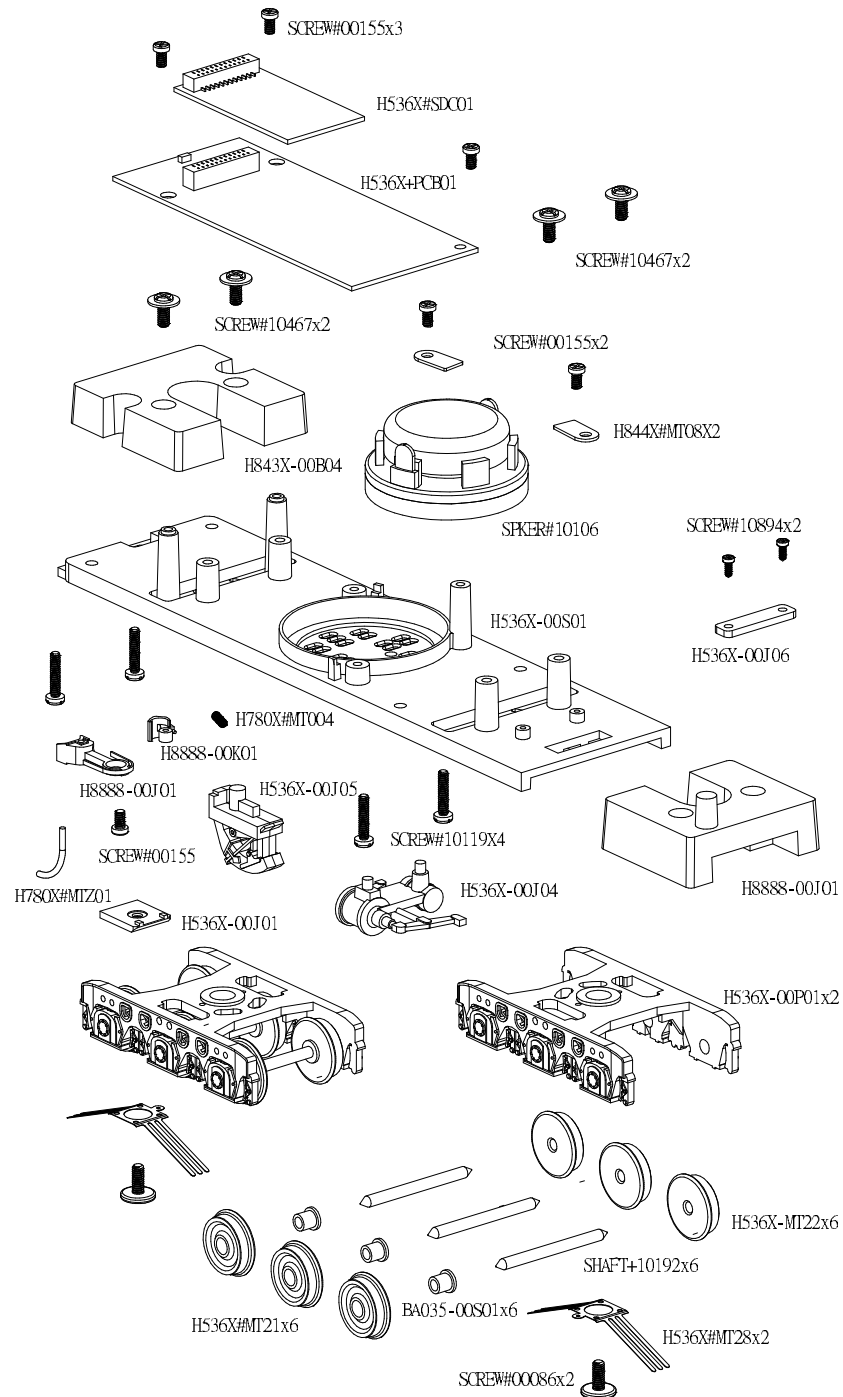
Note: Some parts may only be available as components of a larger subassembly.

BOILER ASSEMBLY



[illegible]

TENDER CHASSIS ASSEMBLY



TENDER BODY ASSEMBLY

