

BACHMANN®



Thank you for purchasing this Bachmann DCC-equipped locomotive. With DCC On Board technology, you can control the direction, speed, and lighting of this locomotive using Bachmann's *E-Z Command*® Digital Command Control System or any NMRA-compliant DCC system. Your Bachmann DCC-equipped locomotive is also 100 percent backwards-compatible with standard DC (non-digital) railroad layouts. Regardless of which system you choose, be sure to read the manufacturer's programming instructions in order to ensure satisfactory operation.

DCC-Equipped Locomotive Operation

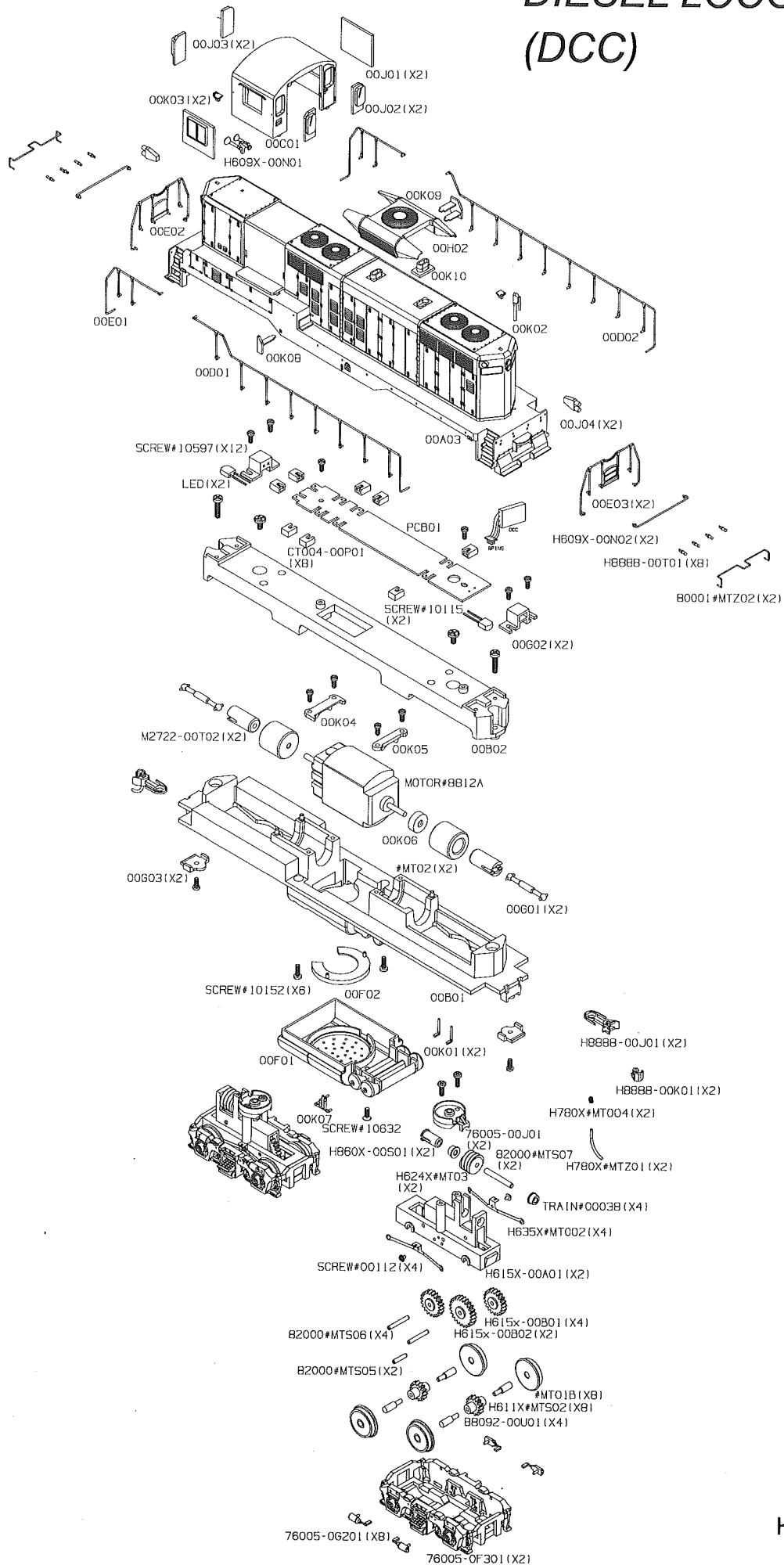
This locomotive is equipped with a 28-speed step decoder that is factory-programmed to address button 3 on NMRA-compliant DCC systems. To assign a new address or to program relative directional travel (forward and reverse operation), follow your control system manufacturer's programming instructions.

Bachmann's DCC On Board offers total lighting control, with constant directional lighting (if applicable) and a dimming function. The on/off lighting feature is factory-programmed to function button 10 (F10) on the *E-Z Command* system and other NMRA-compliant DCC systems. Directional lighting is determined by how you program your locomotive to recognize forward and reverse. The dimming function is factory programmed at function button 1 (F1) on the *E-Z Command* system and other NMRA-compliant DCC systems. When the dimming function is activated, locomotive lighting is reduced in intensity by half.



Bachmann Industries, Inc. 1400 East Erie Avenue Philadelphia, PA 19124 www.bachmanntrains.com

HO GP9 DIESEL LOCOMOTIVE (DCC)



H628X-IS001