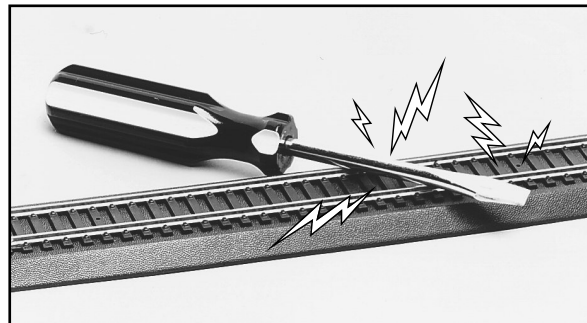


## SHORT CIRCUITS

If your train stops or fails to start, a short circuit may be indicated. **UNPLUG THE POWER PACK AT ONCE.** Derailed wheels may cause a short, so check to make sure all wheels are properly on the track. Check all connections and be sure that no metal of any sort is across the rails (figure 9), including metal-coated tinsel or holiday ornament hooks. After checking everything carefully, resume operation by reconnecting to the engine with *E-Z App*™.

**NOTE: THE SYSTEM IS PROTECTED BY A CIRCUIT BREAKER THAT AUTOMATICALLY RESETS AFTER A SHORT CIRCUIT IS CORRECTED. ALLOW UP TO FIVE MINUTES FOR CIRCUIT BREAKER RESET BEFORE RESUMING OPERATION.**



9

## BREAK-IN PERIOD

Your train is a carefully engineered scale model, and like any fine piece of machinery, it will work best after a few hours of actual running time.

## LUBRICATION

After every 24 hours of operation, your train set requires light lubrication to keep it in top operating condition. **DO NOT USE COMMON HOUSEHOLD LUBRICANTS, AS THEY MAY DAMAGE YOUR TRAIN.** Contact your local hobby retailer for proper lubrication products and procedures.

## CLEANING AND MAINTENANCE

Care must be taken to clean and maintain your train for optimum performance. Clean track and clean wheels ensure good electrical contact for proper train operation. After every eight hours of use, wipe the track rails and exposed portions of your locomotive's wheels with a soft, lint-free cloth or cotton swab to ensure good electrical contact. The removal of black residue is normal. **DO NOT USE STEEL WOOL TO CLEAN YOUR TRACK.** If your track should become very dirty and dull looking, clean it with one of the **RECOMMENDED TRACK CLEANERS** available at your local hobby retailer. (COMMON SOLVENTS ARE NOT RECOMMENDED; THEY MAY DAMAGE PLASTICS.) Make sure your track is free from lint, fiber, and loose materials which may be sucked into the motor.

## STORAGE

Save your Bachmann train set box for storage. For best results next year, reverse the above assembly procedures and clean each part before storage.

## TOLL FREE NUMBER FOR SERVICE ASSISTANCE

**IN THE EVENT YOU HAVE ANY DEFECTIVE OR DAMAGED PARTS, DO NOT RETURN THE COMPLETE SET TO THE STORE WHERE IT WAS PURCHASED. AFTER CHECKING ALL ASSEMBLY AND OPERATING PROCEDURES LISTED ON THIS SHEET,**

CALL US AT 1-800-356-3910 (toll-free within the United States and Canada only) or 215-533-1600 (for all countries)

Monday-Friday 8 A.M. - 4 P.M., Eastern Time,

THEN RETURN ONLY THOSE PARTS REQUIRING SERVICE TO:

BACHMANN SERVICE DEPARTMENT; 1400 EAST ERIE AVENUE; PHILADELPHIA, PA 19124-5698; USA.

**AS YOU MIGHT IMAGINE, THE HOLIDAY SEASON IS AN EXTREMELY BUSY TIME FOR US.**

*Please be patient; your call will be answered.*

**WE WANT YOU TO ENJOY YOUR *E-Z App*® TRAIN SET!**



**BACHMANN INDUSTRIES, INC.**  
1400 East Erie Avenue, Philadelphia, PA 19124 USA  
www.bachmanntrains.com  
Printed in China

The *Bluetooth*® word mark and logos are registered trademarks owned by Bluetooth SIG, Inc. and any use of such marks by Bachmann Industries, Inc. is under license. Other trademarks and trade names are those of their respective owners.

TRAIN-IS149



**CAUTION-ELECTRICALLY OPERATED PRODUCT**  
NOT RECOMMENDED FOR CHILDREN UNDER 14 YEARS OF AGE. AS WITH ALL ELECTRIC PRODUCTS, PRECAUTIONS SHOULD BE OBSERVED DURING HANDLING AND USE TO PREVENT ELECTRIC SHOCK. INPUT: 120 VAC 60Hz. OUTPUT: DC 16V 1000mA

## BACHMANN'S E-Z APP™ GENERAL ASSEMBLY INSTRUCTIONS

### FOR QUICKEST SETUP AND BEST TRAIN PERFORMANCE, PLEASE READ THESE INSTRUCTIONS BEFORE OPERATION

*(All sections may not apply to your specific model train product.)*

In the event of damaged or defective components, **DO NOT RETURN THIS TRAIN SET TO THE STORE WHERE IT WAS PURCHASED.** Please review the assembly and operating instructions listed on this sheet and the warranty included with this set. If service is required, contact the Bachmann Service Department at 1-800-356-3910 (toll-free within the United States and Canada only) or 215-533-1600 (for all countries) to determine the appropriate course of action.

Bachmann's Service Department is available from 8:00 a.m. to 4:00 p.m. Eastern Time.

Please be advised that certain times of year, such as the holiday season, can be extremely busy for us. Due to the quantity of calls we receive, you may need to leave a message on our voice mail system. Your call will be returned as soon as a service technician is available. We want you to enjoy your *E-Z App*™ Train Set and we thank you in advance for your patience.

The patented E-Z Track® System in this train set combines Bachmann's snap-fit track and roadbed design with the universally accepted method of track connection that ensures proper track alignment and a continuous electrical circuit. **A FEW EXTRA MINUTES SPENT TO MAKE SURE THE TRACK RAILS ARE PROPERLY CONNECTED WILL GUARANTEE SMOOTH OPERATION AND OPTIMUM SET PERFORMANCE.**

**\*\*\*THIS IS THE MOST IMPORTANT STEP IN THE ASSEMBLY OF YOUR TRAIN SET.\*\*\***

**IMPORTANT NOTICE:** TO ENSURE TROUBLE-FREE OPERATION, USE ONLY BACHMANN'S PATENTED E-Z TRACK® PRODUCTS WITH THIS SET. USE OF NON-COMPATIBLE SYSTEMS MAY RESULT IN UNSATISFACTORY PERFORMANCE.

**NOTE TO PARENTS:** IT IS RECOMMENDED THAT THIS SET BE PERIODICALLY EXAMINED FOR POTENTIAL HAZARDS AND THAT ANY POTENTIALLY HAZARDOUS PARTS BE REPAIRED OR REPLACED.

## TRAIN SET ASSEMBLY

Your Bachmann train set comes with a list of contents. Check this to make sure you have all the parts you need before starting assembly. Choose a firm and flat surface for assembly such as a floor, carpet, or tabletop. To make sure you have enough working room, it's a good idea to first make a rough track layout by loosely placing sections of E-Z Track® in the configuration desired.

## PROPER E-Z TRACK® ASSEMBLY

**GREAT CARE MUST BE GIVEN TO ASSEMBLING TRACK SECTIONS! IMPROPER ASSEMBLY WILL CAUSE DERAILMENTS AND/OR INTERRUPTED ELECTRICAL CONTACT.**

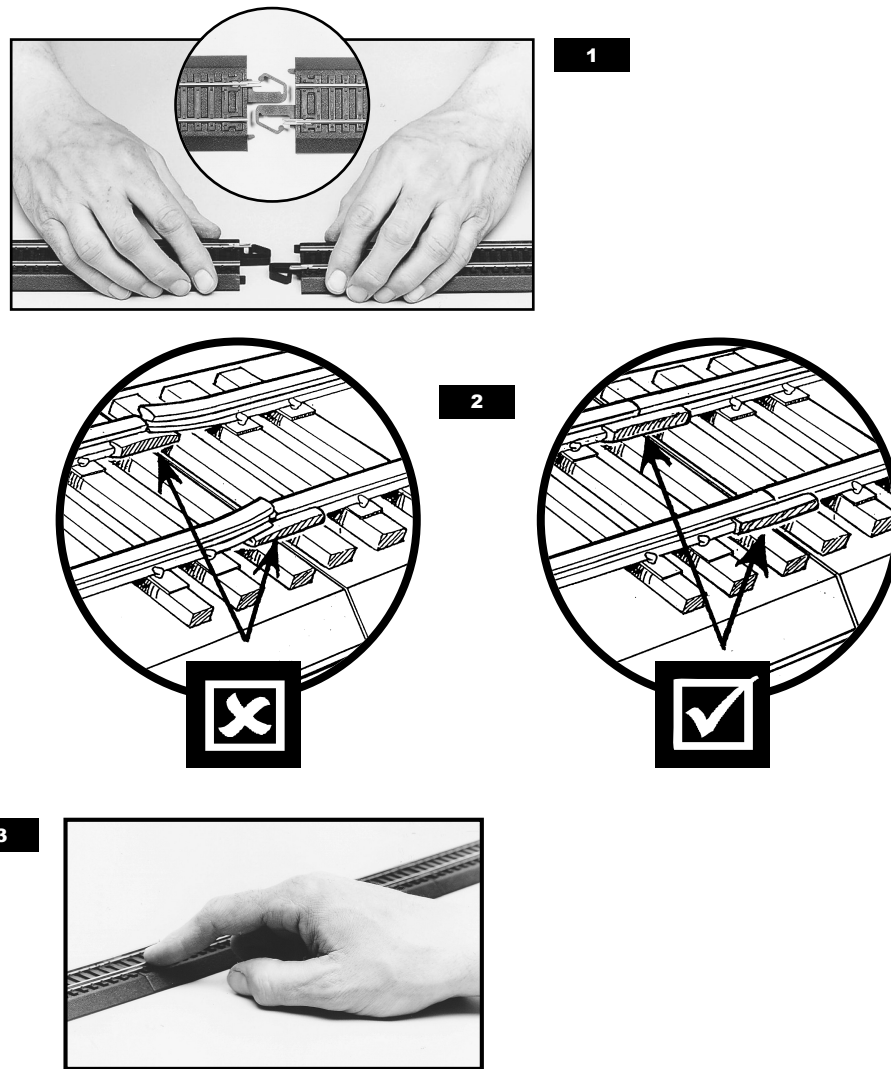
When assembling the track, snap it together tightly (figure 1), **AND AT THE SAME TIME**, make sure the rail and rail joiners are seated properly as shown in figure 2. Please note: the rail joiners form a continuous connection for the electric current. *Extreme care should be taken*

**PROPER E-Z TRACK® ASSEMBLY - Continued**

when assembling track to make sure the joiners connect the rail properly so you have continuous electrical contact and a smooth track surface. It is important that ALL JOINTS ARE TIGHT and LEVEL to ensure proper running of your train set.

After the track is assembled, CHECK ALL JOINTS to make sure the track is flush and level, and that there are no bumps or distortions. DO THIS BY LIGHTLY RUNNING YOUR FINGERS OVER THE TOP SURFACE OF THE RAILS (FIGURE 3). Any trouble can be corrected by the careful checking of rail joiner fit or slight manipulation with a pair of small pliers.

NOTE: IF ASSEMBLED TRACK MUST BE MOVED, CARE SHOULD BE TAKEN TO AVOID BENDING THE TRACK WHERE SECTIONS CONNECT. IT IS ALWAYS BEST TO ASSEMBLE THE TRACK WHERE IT IS TO BE DISPLAYED.



Be sure rail joiners do not slip under the rails without properly connecting.

**READ BEFORE USE**

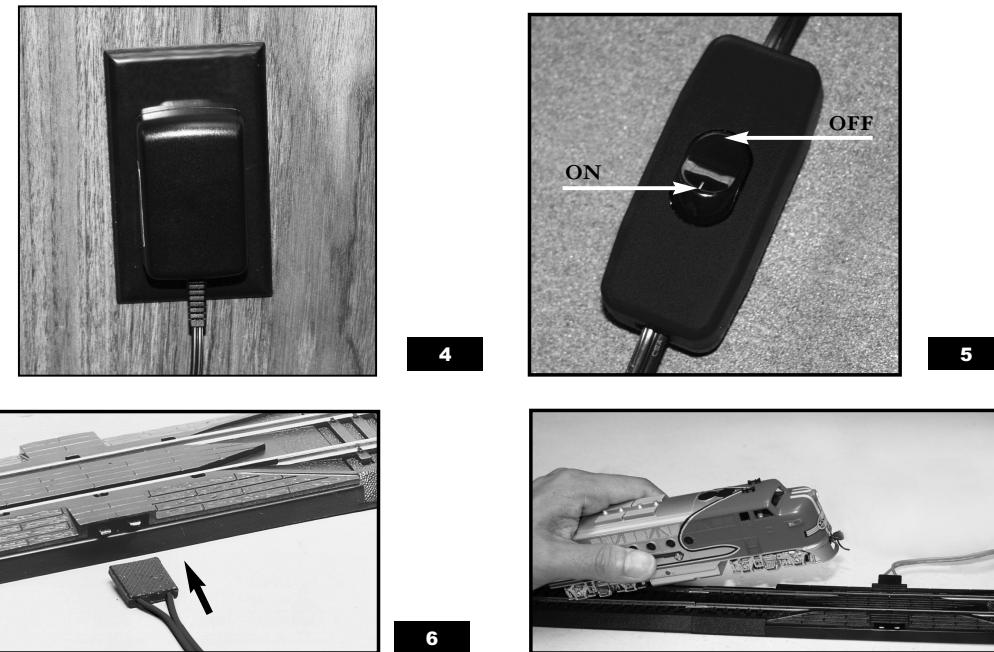
**ATTENTION TO PARENTS:**

- \*WARNING: To reduce the risk of fire or electric shock, do not expose power pack to rain or moisture.
- \*CAUTION: To reduce the risk of electric shock, do not remove power pack cover. No user serviceable parts are inside. Refer servicing to qualified service personnel.
- \*CAUTION: To prevent electric shock, do not connect power pack to an AC outlet in the bathroom, near any sink, or in any other damp area.
- \*CAUTION: To prevent electric shock, fire, or personal injury, do not operate when the power pack is damaged. Periodic examination of the unit is recommended.

**CONNECTING TRACK POWER**

Plug the power pack into a wall outlet (figure 4). With the power button in the “OFF” position (figure 5), connect the other end of the terminal wire to the terminal/reailer track by simply plugging it in as shown in figure 6.

Place only the locomotive (and tender if permanently attached) on the track by simply running its wheels back and forth over the terminal/reailer track as shown in figure 7. Be sure all wheels are properly on the track before operating your train.

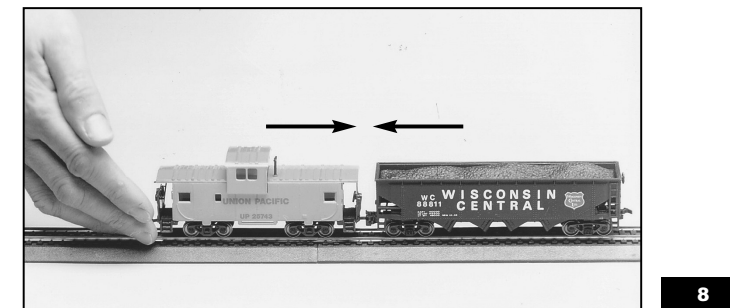


**OPERATION**

Turn the power pack button to the “ON” position and follow the Quick Start Guide to download *E-Z App™* and begin operating your train.

You may now place additional cars on the track by running their wheels back and forth over the terminal/reailer track. To couple the cars, gently push them together as shown in figure 8. The couplers will engage automatically.

NOTE: DO NOT LEAVE YOUR TRAIN RUNNING UNATTENDED. YOU WILL EXTEND THE MECHANICAL LIFE OF YOUR TRAIN BY NOT RUNNING IT FOR PROLONGED PERIODS IN YOUR ABSENCE. TURN THE POWER PACK “OFF” AND UNPLUG THE POWER PACK WHEN NOT IN USE.



**ACTION CHECKLIST IF YOUR TRAIN DOESN'T RUN OR STOPS RUNNING**

**IF YOUR TRAIN DOESN'T RUN, CHECK THE FOLLOWING:**

1. MAKE SURE THE POWER PACK IS PLUGGED INTO A LIVE WALL RECEPTACLE.
2. MAKE SURE ALL LOCOMOTIVE AND CAR WHEELS ARE ON THE TRACK.
3. CHECK TO MAKE SURE ALL WIRING IS SECURE.
4. CHECK TO MAKE SURE THE TRACK IS PROPERLY ASSEMBLED.
5. IF YOUR TRAIN HITS A BUMP OR DERAILS ANYWHERE ALONG THE TRACK, THAT SECTION OF TRACK MAY NOT BE PROPERLY SEATED IN THE RAIL JOINER. MAKE SURE ALL TRACK IS PROPERLY INSTALLED. REFER TO PREVIOUS TRACK ASSEMBLY INSTRUCTIONS.
6. MAKE SURE *BLUETOOTH®* IS TURNED ON IN YOUR SMART DEVICE.
7. AN *E-Z APP™*-EQUIPPED ENGINE CAN ONLY BE RUN BY ONE PERSON AT A TIME. IF ANOTHER USER IS OPERATING THE TRAIN WITH *E-Z APP™*, THE USER MUST DISCONNECT BEFORE YOU CAN CONNECT AND CONTROL THE ENGINE WITH *E-Z APP™*.
8. IF THE CONNECTION HAS BEEN LOST BETWEEN YOUR SMART DEVICE AND THE ENGINE, TURN THE TRACK POWER OFF AND ON AND RECONNECT USING *E-Z APP™*.