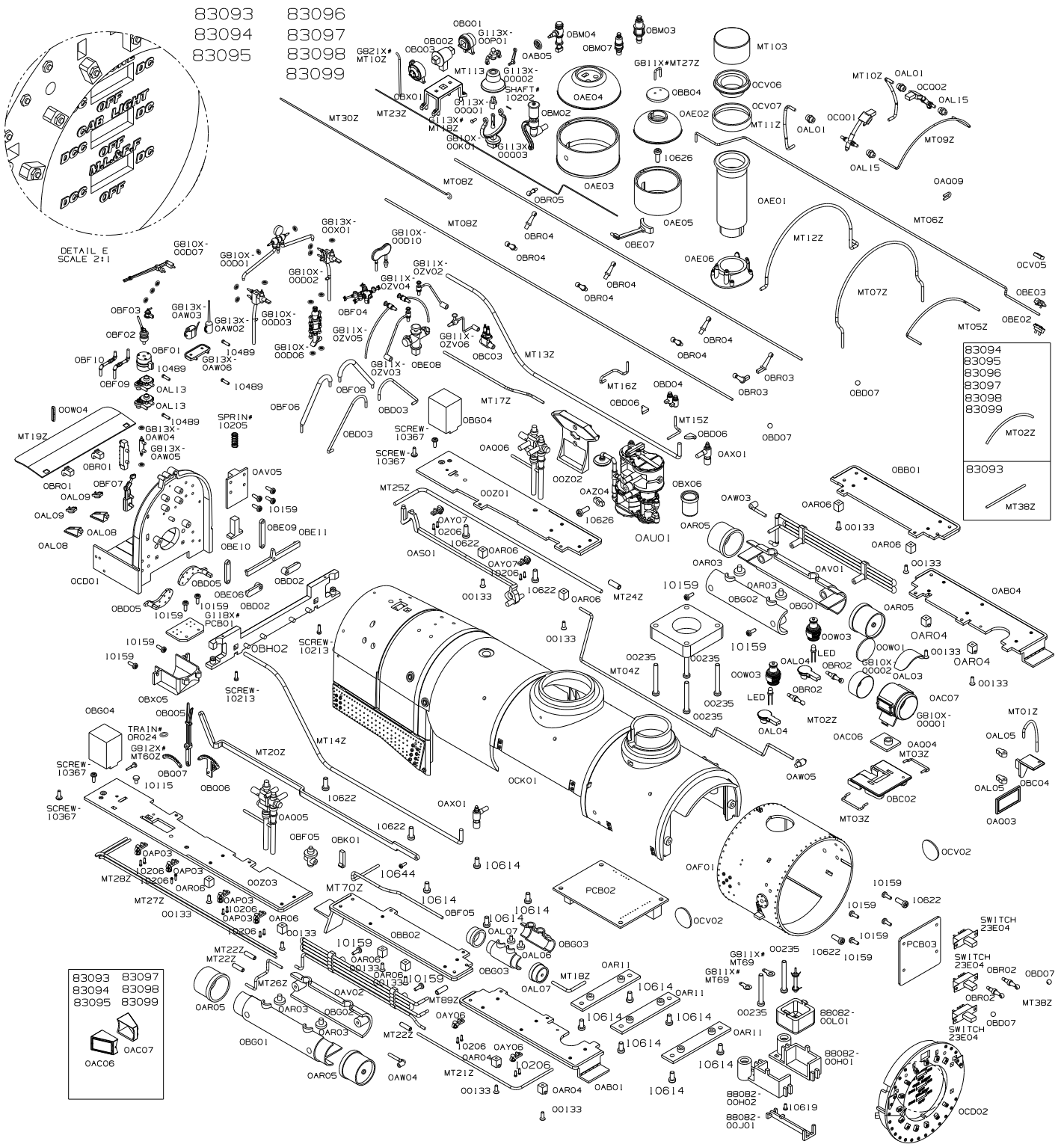


# Boiler Assembly

1:20.3 Large Scale

K-27



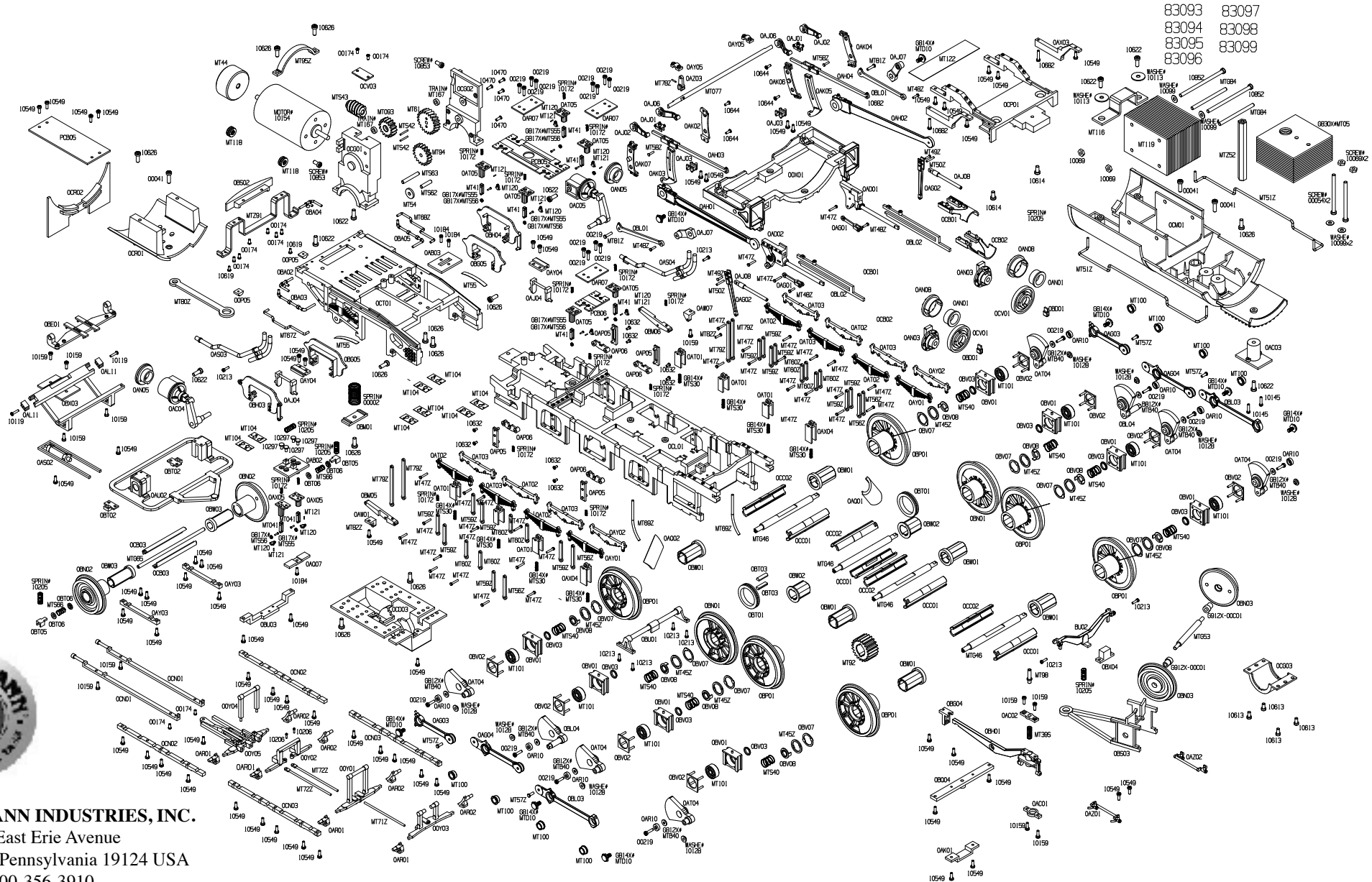
**BACHMANN INDUSTRIES, INC.**  
 1400 East Erie Avenue  
 Philadelphia, Pennsylvania 19124 USA  
 800-356-3910  
[www.bachmanntrains.com](http://www.bachmanntrains.com)  
 Printed in China



# Chassis Assembly

1:20.3 Large Scale

K-27



83093 83097  
83094 83098  
83095 83099  
83096



**BACHMANN INDUSTRIES, INC.**  
1400 East Erie Avenue  
Philadelphia, Pennsylvania 19124 USA  
800-356-3910  
www.bachmanntrains.com  
Printed in China



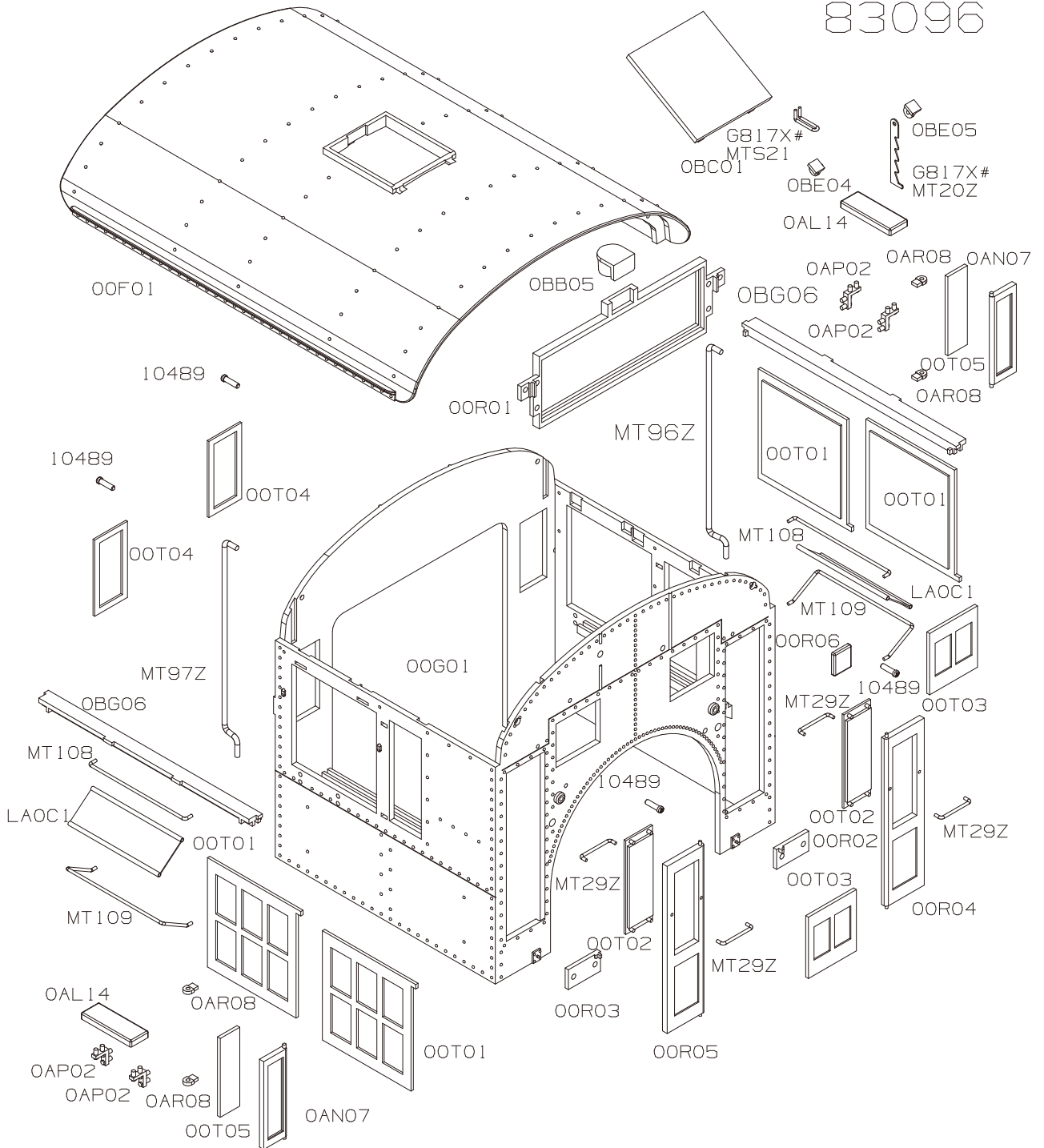


# Post Wreck Cab Assembly

1:20.3 Large Scale

K-27

83096

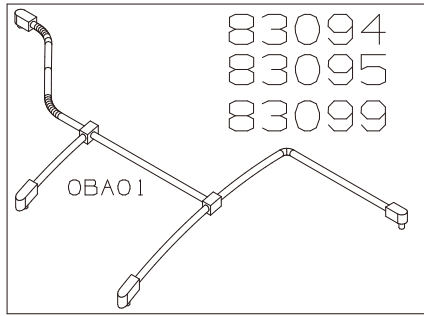


**BACHMANN INDUSTRIES, INC.**  
1400 East Erie Avenue  
Philadelphia, Pennsylvania 19124 USA  
800-356-3910  
www.bachmanntrains.com  
Printed in China

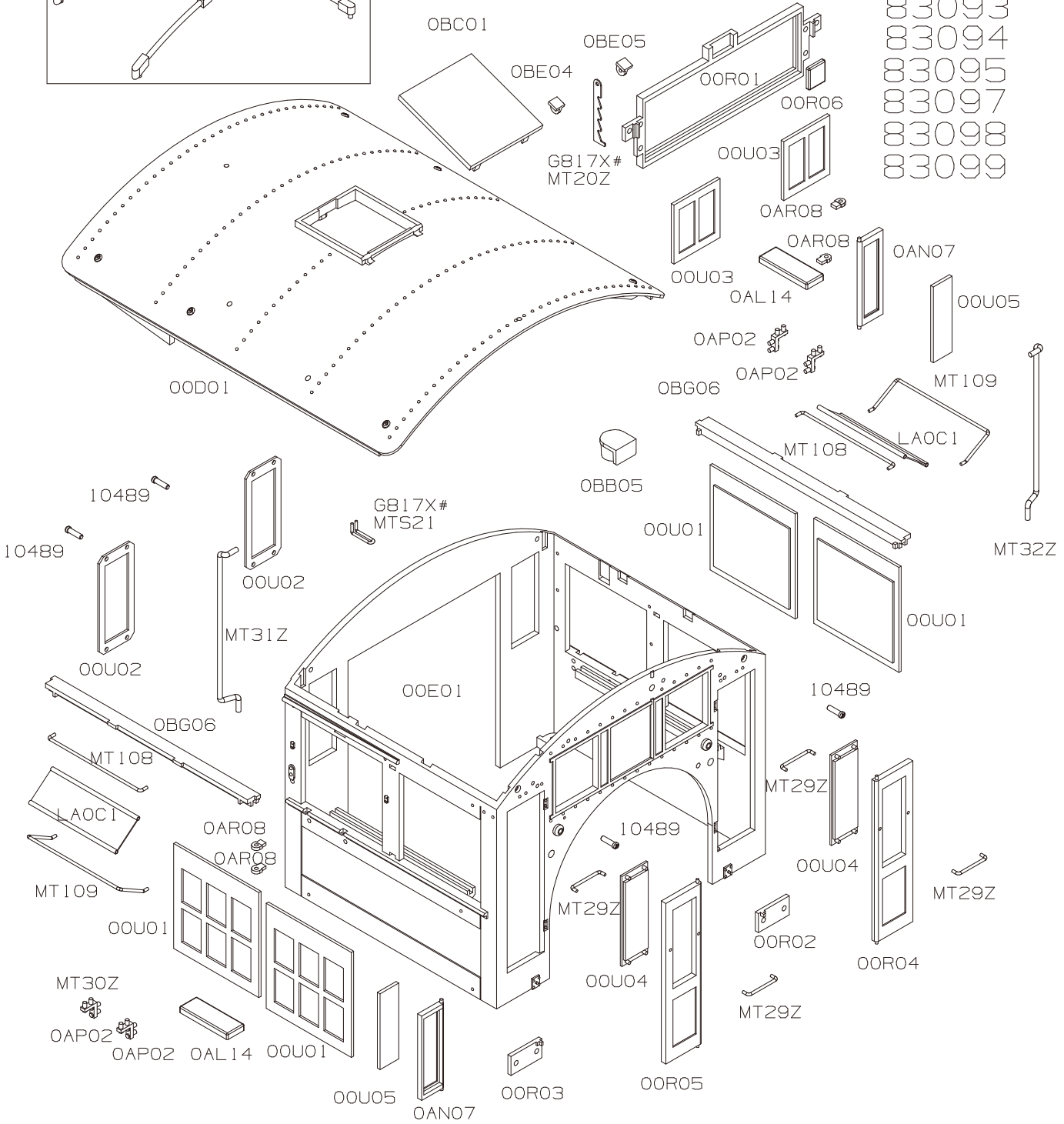
# Wood Cab Assembly

1:20.3 Large Scale

K-27



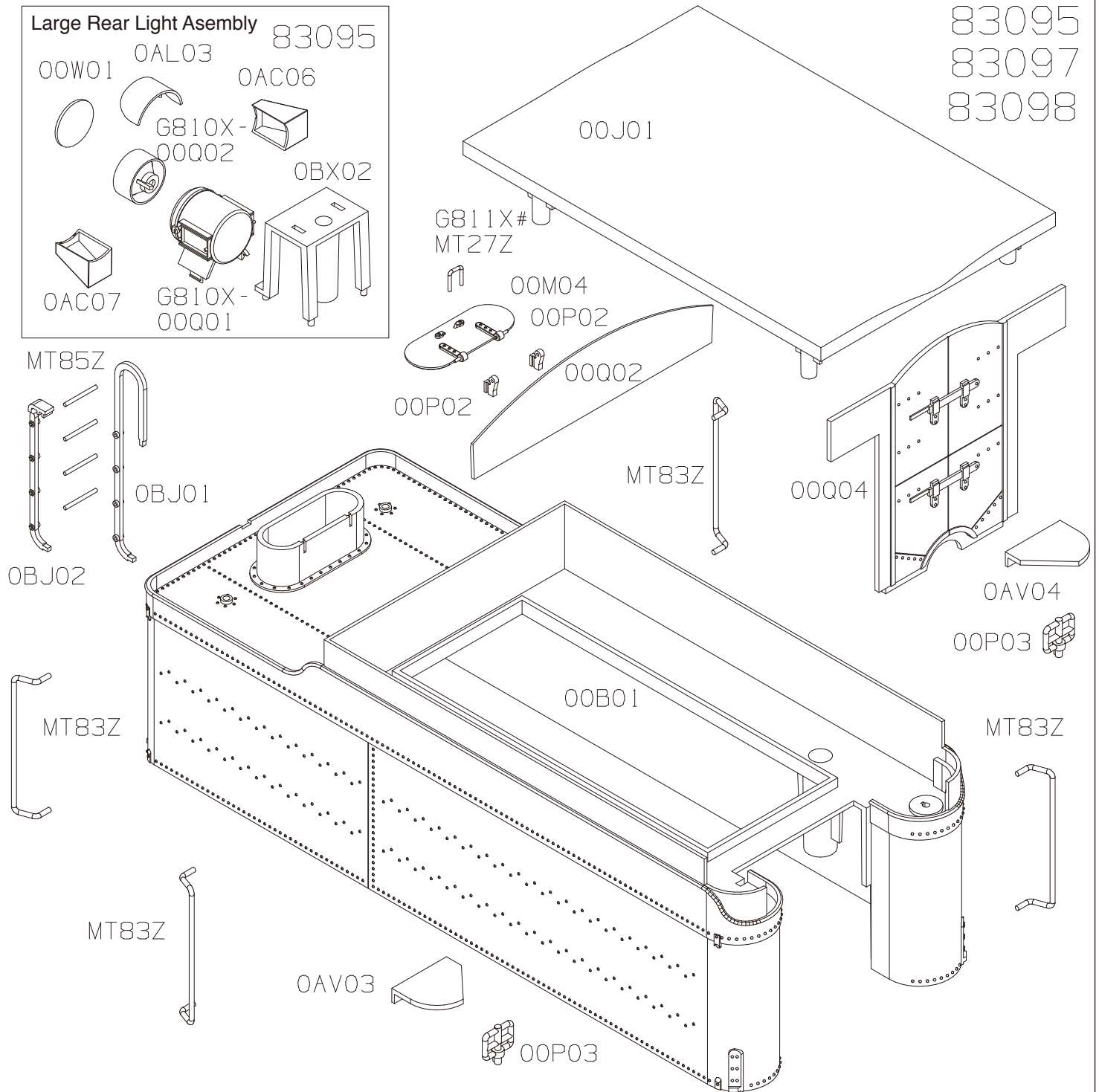
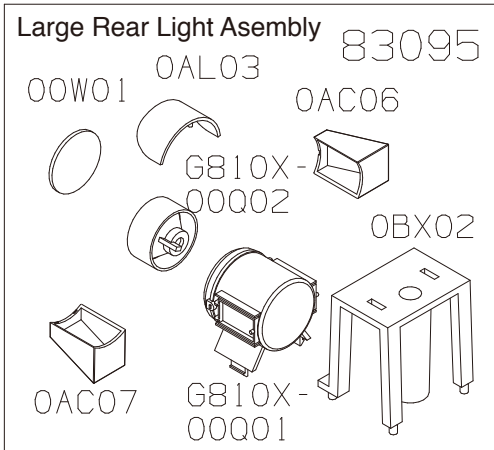
83093  
83094  
83095  
83097  
83098  
83099



**BACHMANN INDUSTRIES, INC.**  
 1400 East Erie Avenue  
 Philadelphia, Pennsylvania 19124 USA  
 800-356-3910  
[www.bachmanntrains.com](http://www.bachmanntrains.com)  
 Printed in China

# Round Corner Tender Assembly

1:20.3 Large Scale  
K-27



83095  
83097  
83098



**BACHMANN INDUSTRIES, INC.**  
1400 East Erie Avenue  
Philadelphia, Pennsylvania 19124 USA  
800-356-3910  
www.bachmanntrains.com  
Printed in China



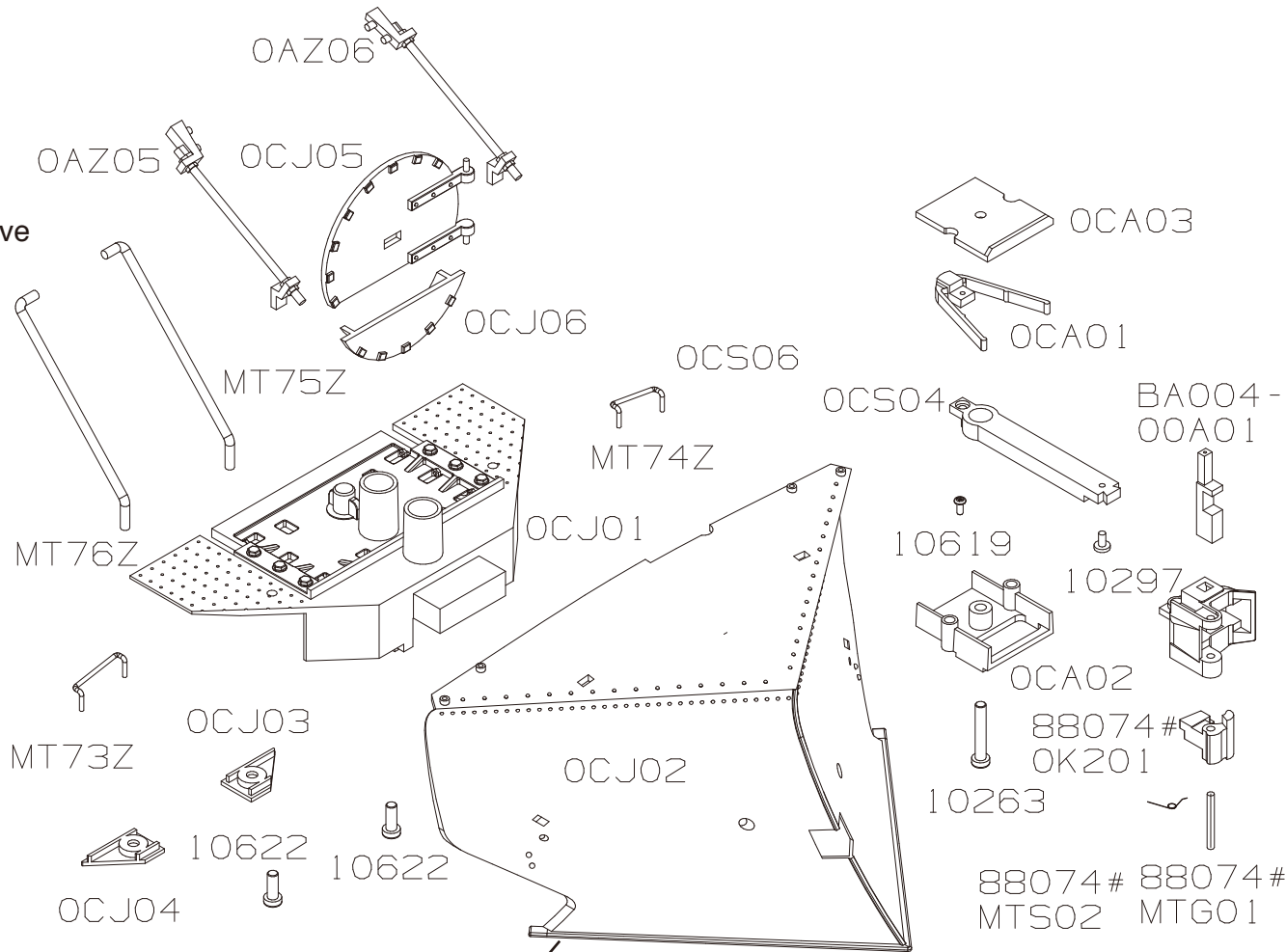


83094  
83096  
83099

# Snow Plow Assembly

1:20.3 Large Scale  
K-27

The snow plow assembly  
is for reference only, not  
applied to all production locomotive



**NOTE:**  
After enlarging the opening  
of the snow plow from inside and  
changing a longer coupler,  
(in accessory bag)  
the coupler can work (push or pull)  
on the track



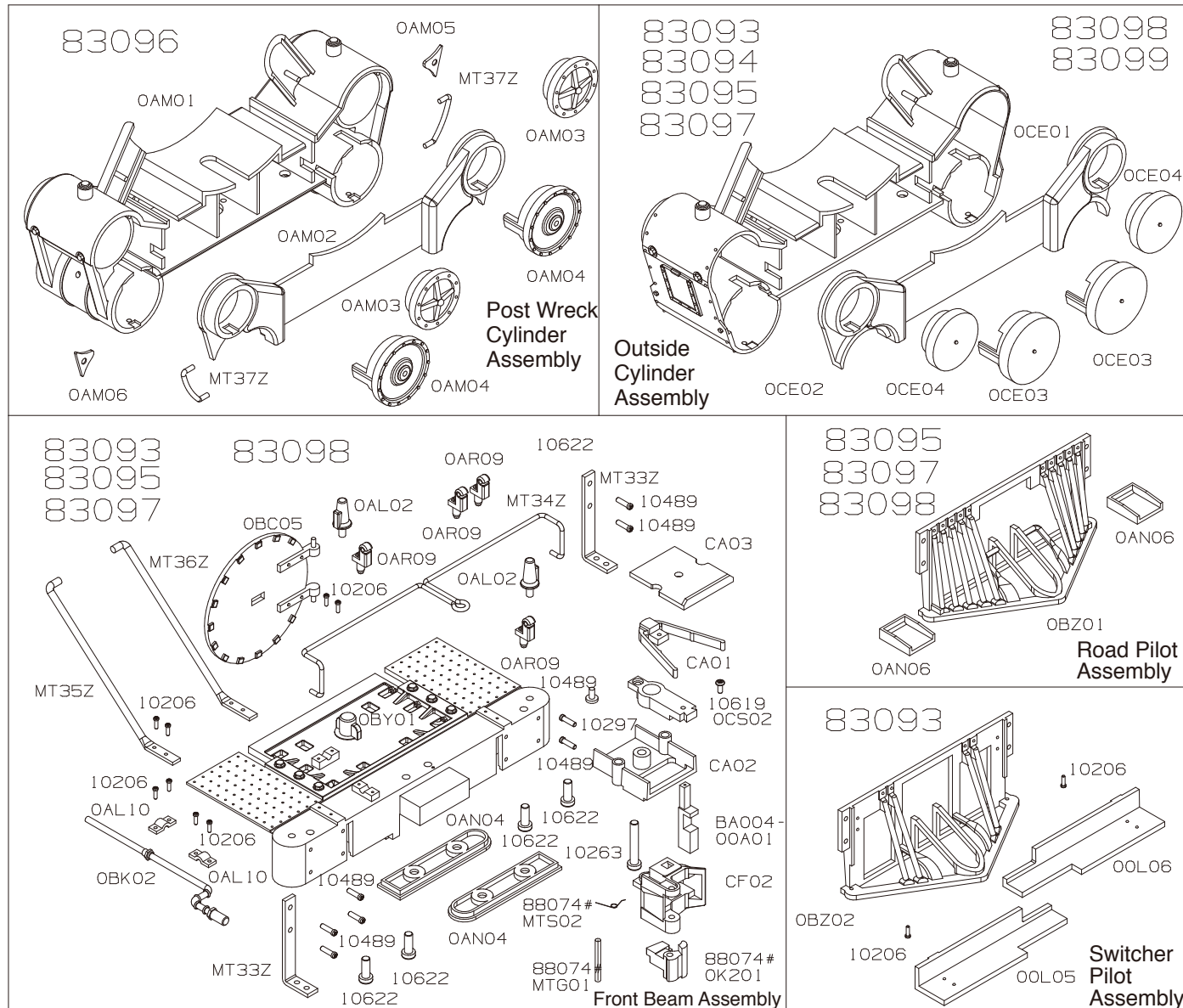
**BACHMANN INDUSTRIES, INC.**  
1400 East Erie Avenue  
Philadelphia, Pennsylvania 19124 USA  
800-356-3910  
www.bachmanntrains.com  
Printed in China



# Cylinder & Pilot Assemblies

1:20.3 Large Scale

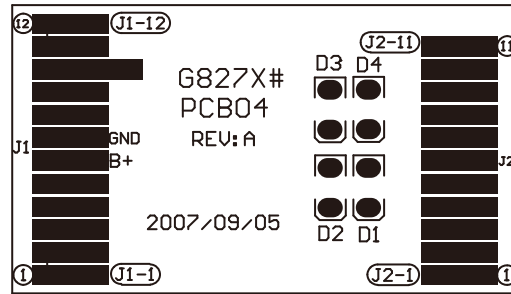
K-27



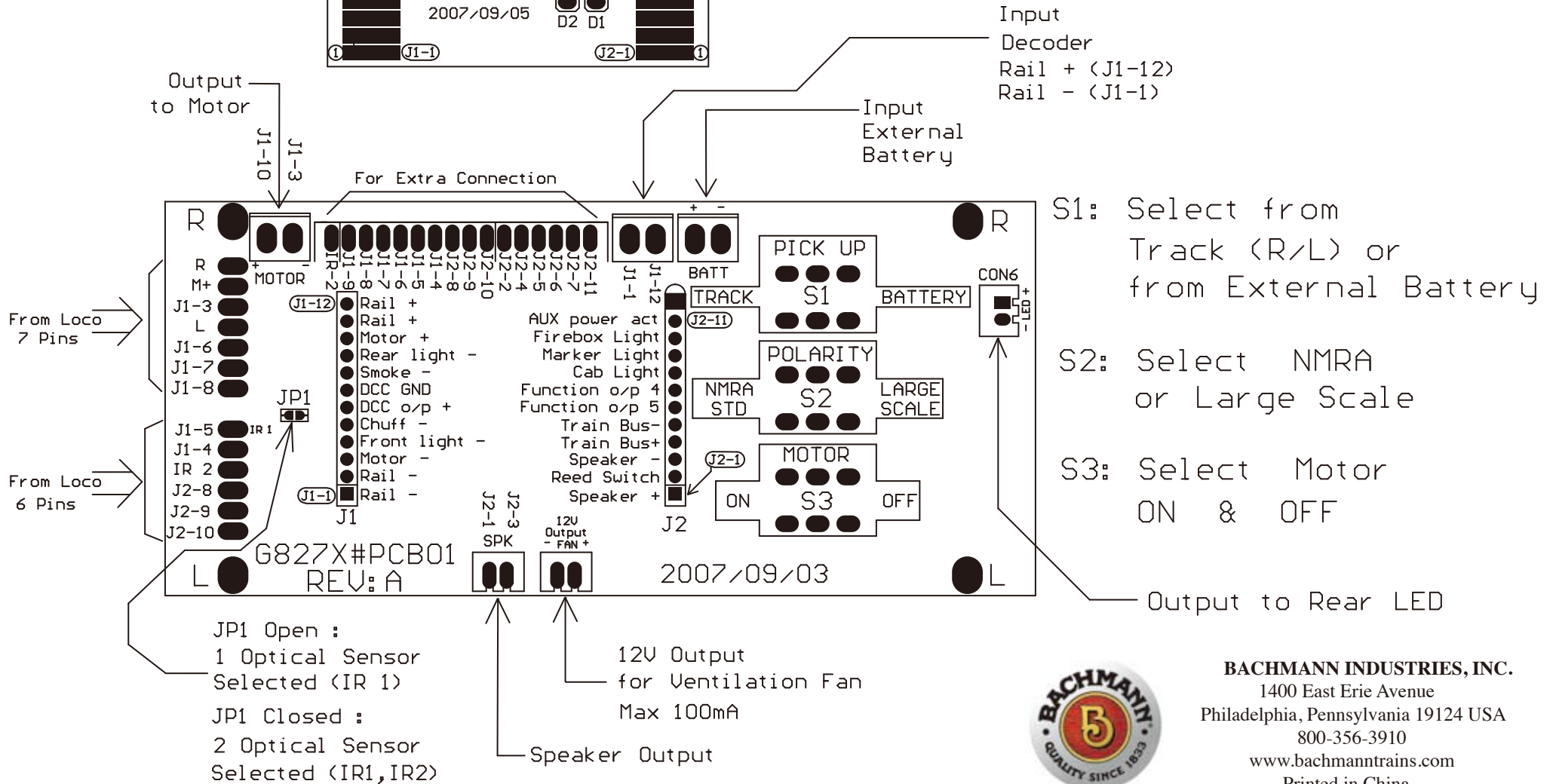
**BACHMANN INDUSTRIES, INC.**  
 1400 East Erie Avenue  
 Philadelphia, Pennsylvania 19124 USA  
 800-356-3910  
 www.bachmanntrains.com  
 Printed in China

# K27 Connection Diagram

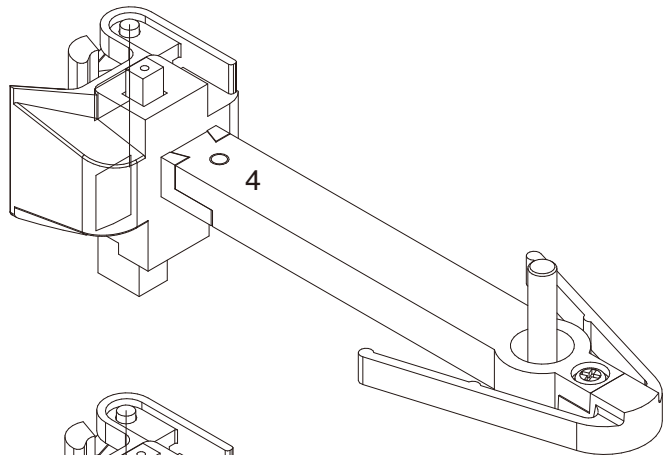
## DC Dummy Board



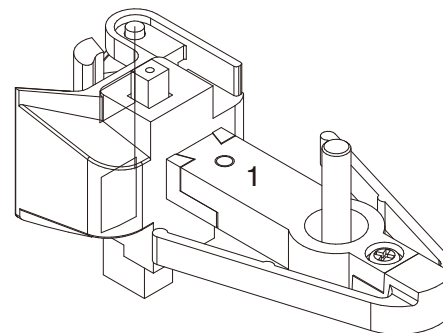
R : Right Track  
 L : Left Track



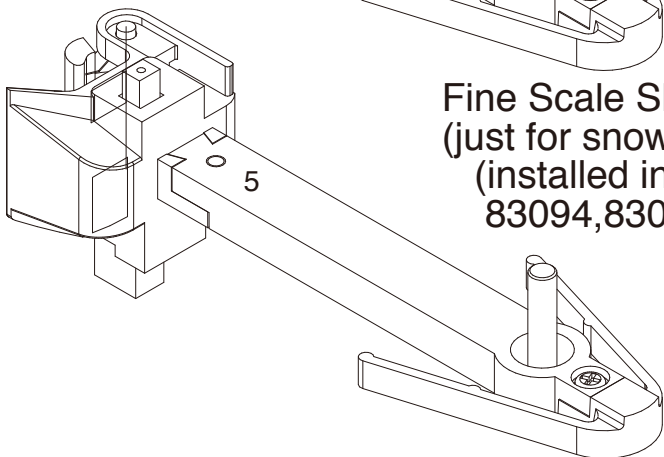
**BACHMANN INDUSTRIES, INC.**  
 1400 East Erie Avenue  
 Philadelphia, Pennsylvania 19124 USA  
 800-356-3910  
 www.bachmanntrains.com  
 Printed in China



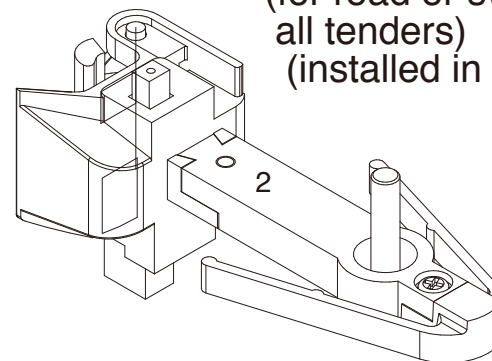
Fine Scale Shorter Coupler  
(just for snow plow)  
(installed in K27-  
83094,83096,83099)



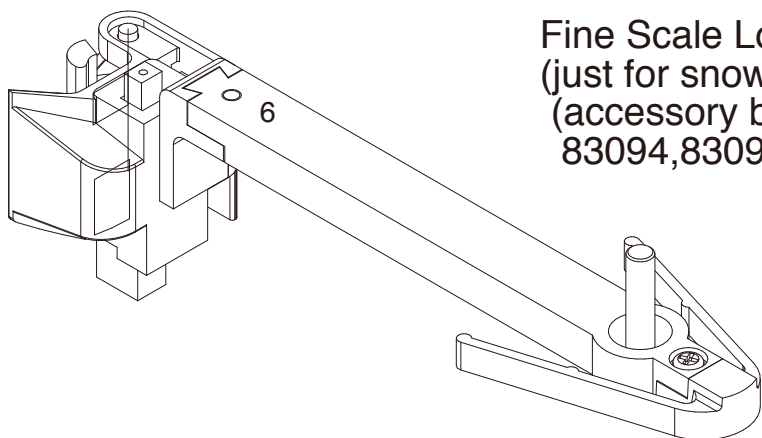
Fine Scale Shorter Coupler  
(for road or switcher pilot &  
all tenders)  
(installed in K27)



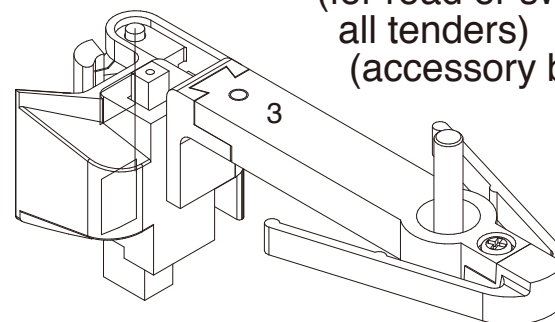
Fine Scale Longer Coupler  
(just for snow plow)  
(accessory bag-  
83094,83096,83099)



Fine Scale Longer Coupler  
(for road or switcher pilot &  
all tenders)  
(accessory bag)



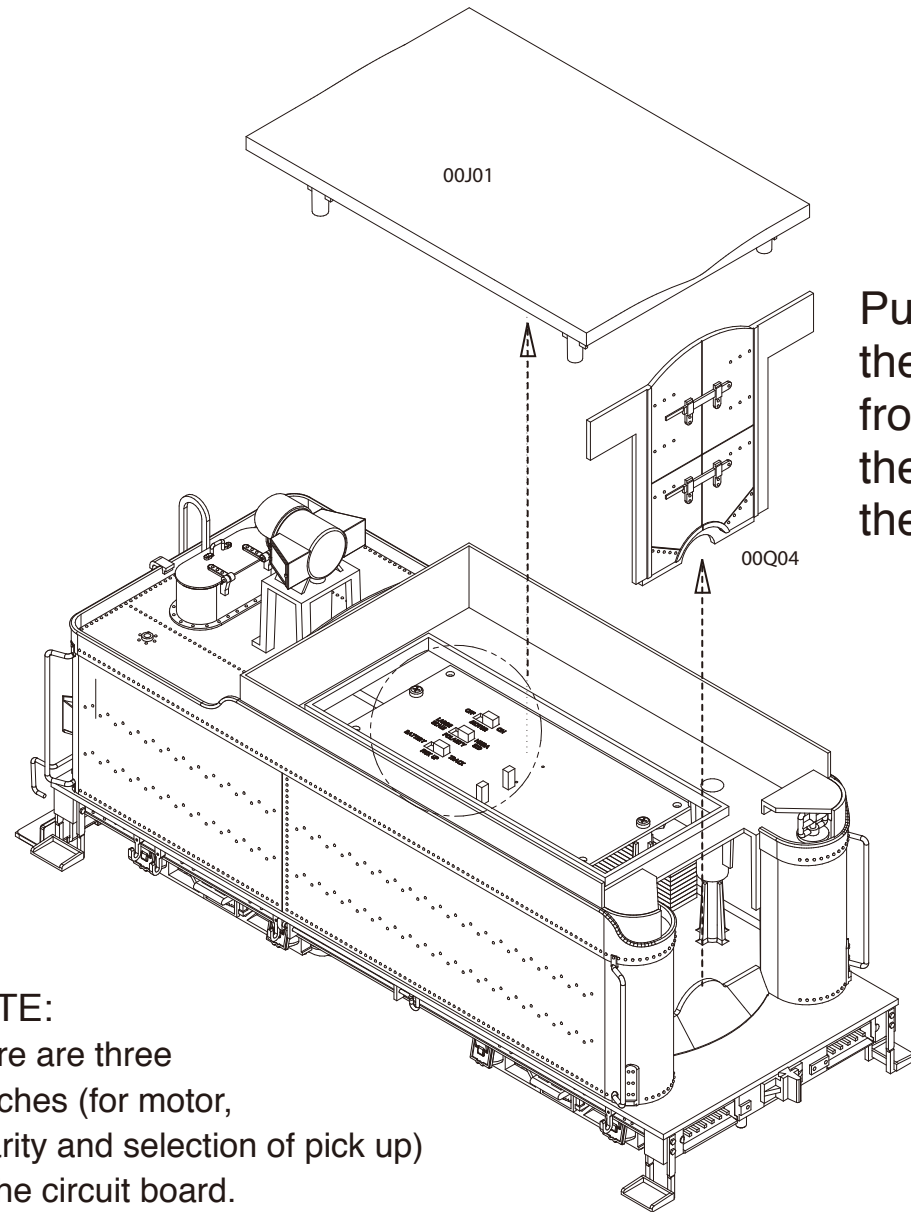
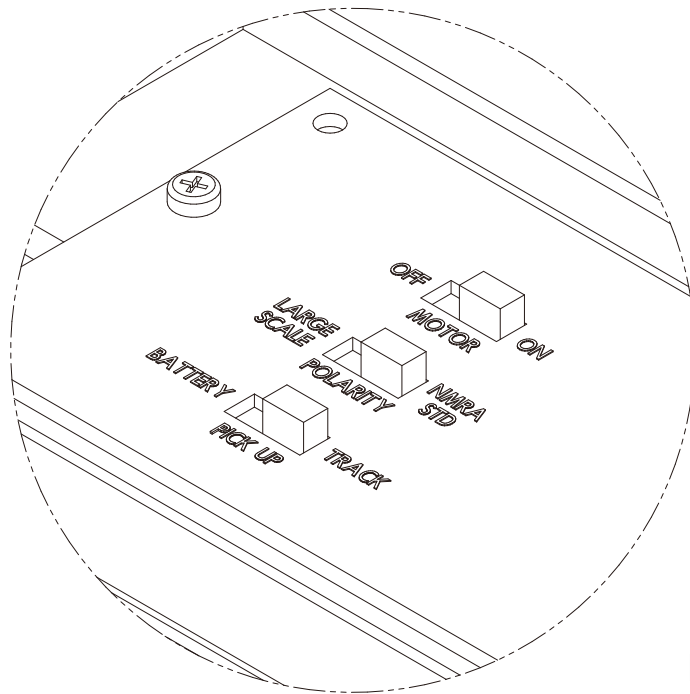
Large Scale Coupler  
(just for snow plow)  
(accessory bag-  
83094,83096,83099)



Large Scale Coupler  
(for road or switcher pilot &  
all tenders)  
(accessory bag)



# How to access the interface circuit board?



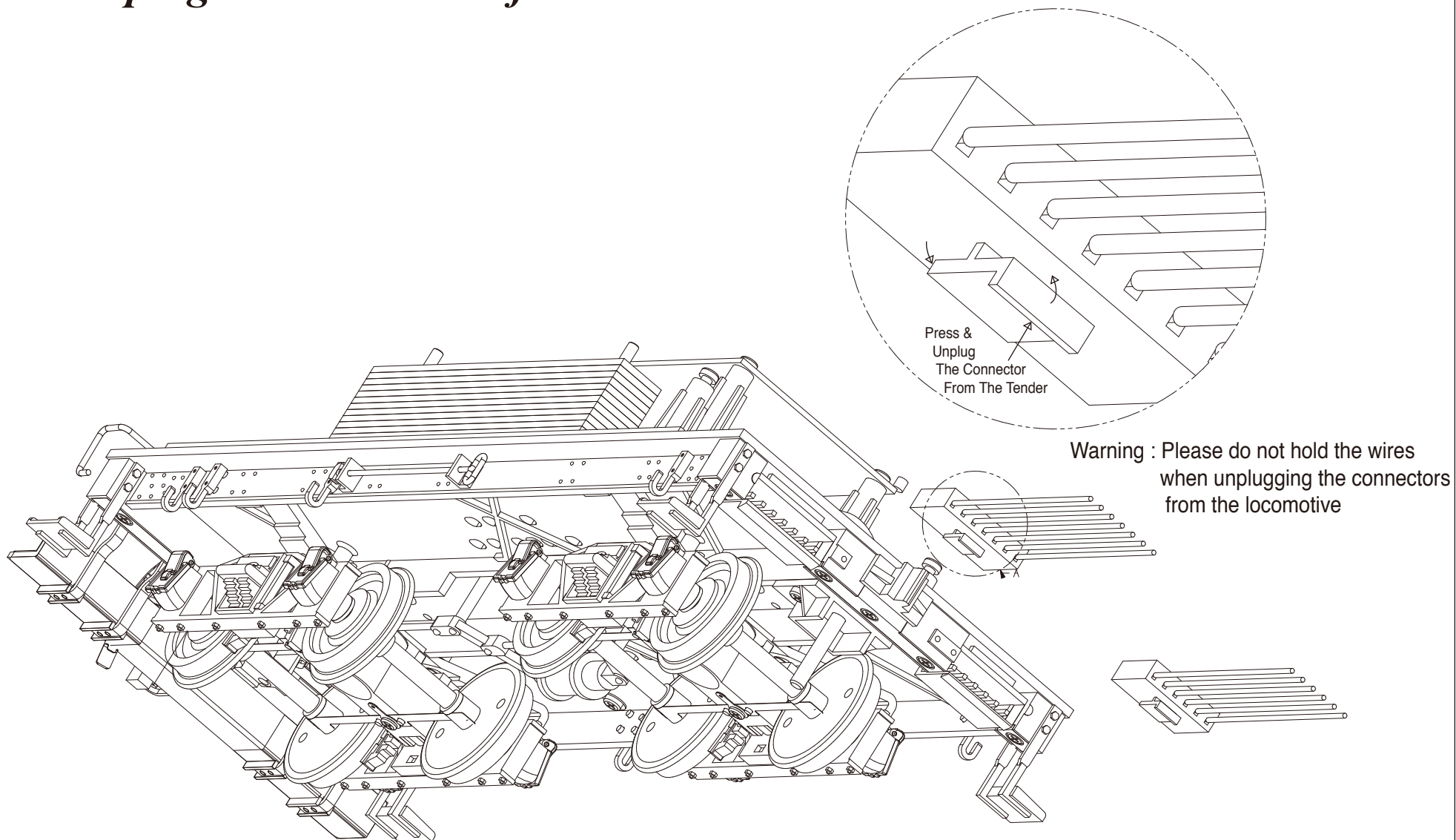
Pull up the tender front wall & then lift up the coal load

**NOTE:**  
There are three switches (for motor, polarity and selection of pick up) on the circuit board.



**BACHMANN INDUSTRIES, INC.**  
1400 East Erie Avenue  
Philadelphia, Pennsylvania 19124 USA  
800-356-3910  
www.bachmanntrains.com  
Printed in China

# How to unplug the connectors from the tender



**BACHMANN INDUSTRIES, INC.**  
1400 East Erie Avenue  
Philadelphia, Pennsylvania 19124 USA  
800-356-3910  
[www.bachmanntrains.com](http://www.bachmanntrains.com)  
Printed in China



## Pin Assignment for the 'DC Dummy Plug' and 'DCC Decoder'

Pin Number J1	Purpose	Pin Number J2	Purpose
J1-1	Rail 1 - Left Wheels	J2-1	Speaker +
J1-2	Rail 1 - Left Wheels	J2-2	Reed Switch Input
J1-3	Motor -	J2-3	Speaker -
J1-4	Front Headlight Ground	J2-4	Train Bus +
J1-5	Chuff/Motion/Sensor Input	J2-5	Train Bus -
J1-6	Decoder + Positive output	J2-6	Function Output
J1-7	Decoder Ground	J2-7	Function Output
J1-8	Smoke Function Ground	J2-8	Function Output: Cab Light
J1-9	Rear Light Ground	J2-9	Function Output: Marker Light
J1-10	Motor +	J2-10	Function Output: FireBox Light
J1-11	Rail 2 + Right Wheels	J2-11	Auxiliary Power Activation
J1-12	Rail 2 + Right Wheels	J2-12	NO PIN on Decoder



**BACHMANN INDUSTRIES, INC.**

1400 East Erie Avenue  
Philadelphia, Pennsylvania 19124 USA  
800-356-3910

[www.bachmanntrains.com](http://www.bachmanntrains.com)

Printed in China

## Pin Assignment for the 'DC Dummy Plug' and 'DCC Decoder'

Pin Number J1	Purpose	Pin Number J2	Purpose
J1-1	Rail 1 - Left Wheels	J2-1	Speaker +
J1-2	Rail 1 - Left Wheels	J2-2	Reed Switch Input
J1-3	Motor -	J2-3	Speaker -
J1-4	Front Headlight Ground	J2-4	Train Bus +
J1-5	Chuff/Motion/Sensor Input	J2-5	Train Bus -
J1-6	Decoder + Positive output	J2-6	Function Output
J1-7	Decoder Ground	J2-7	Function Output
J1-8	Smoke Function Ground	J2-8	Function Output: Cab Light
J1-9	Rear Light Ground	J2-9	Function Output: Marker Light
J1-10	Motor +	J2-10	Function Output: FireBox Light
J1-11	Rail 2 + Right Wheels	J2-11	Auxiliary Power Activation
J1-12	Rail 2 + Right Wheels	J2-12	<del>NO PIN on Decoder</del>



**BACHMANN INDUSTRIES, INC.**  
 1400 East Erie Avenue  
 Philadelphia, Pennsylvania 19124 USA  
 800-356-3910  
[www.bachmanntrains.com](http://www.bachmanntrains.com)  
 Printed in China