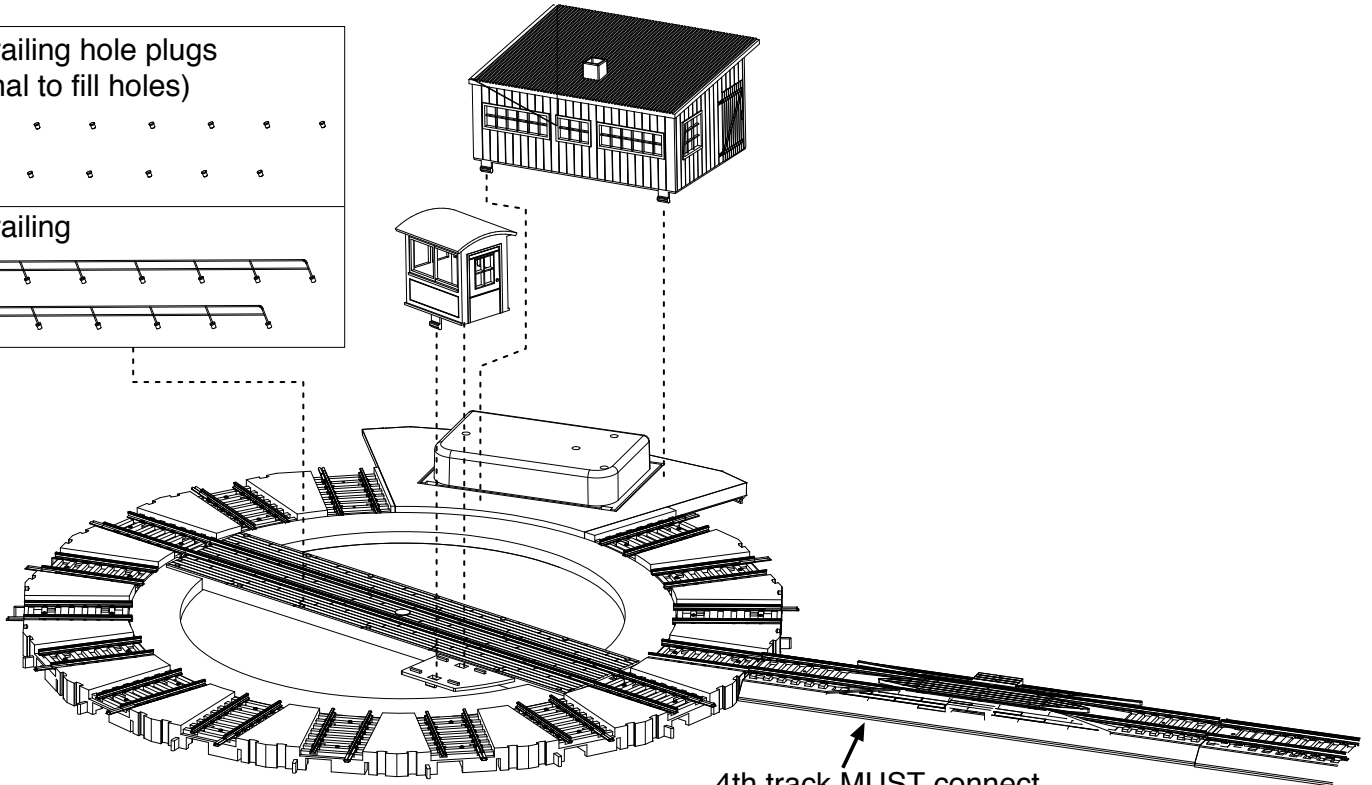
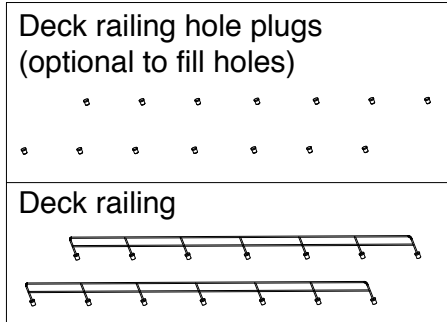


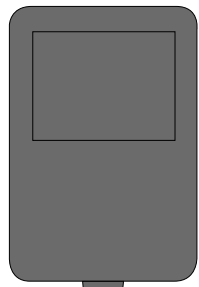
DCC MODE INSTRUCTIONS

(DCC power source required. Use Bachmann E-Z Command® as shown or equivalent.)



4th track **MUST** connect to mainline track for track power and turntable control

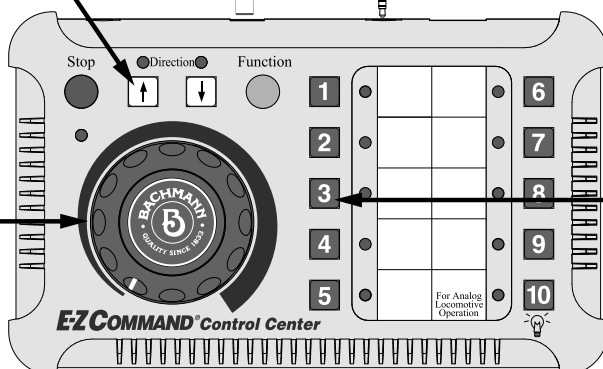
Wall power pack



Turntable direction control

Power out to track
(Connector for E-Z Track® shown. If more length required use plug-in 10' red power extension wire #44498)

Turntable speed control

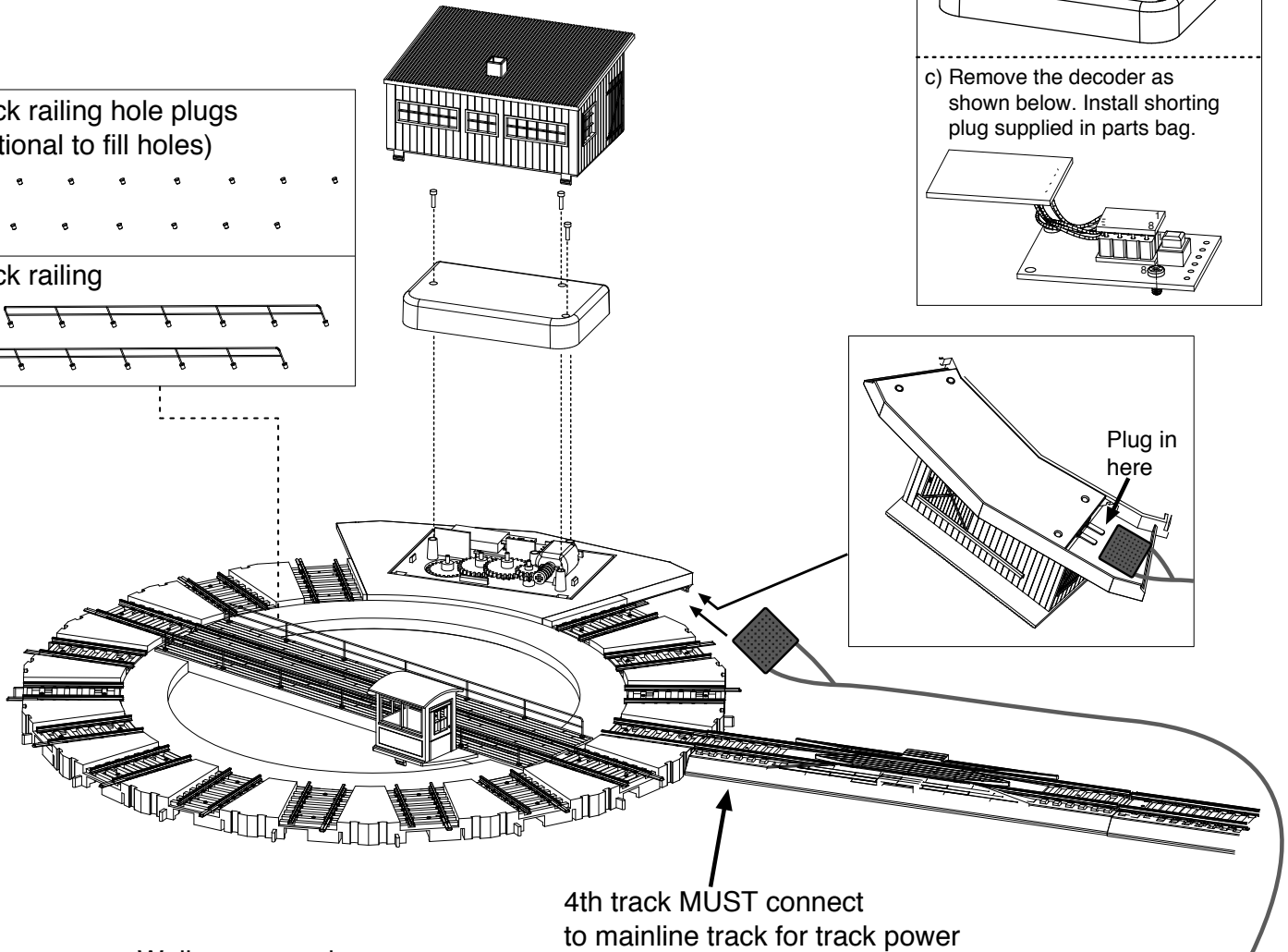
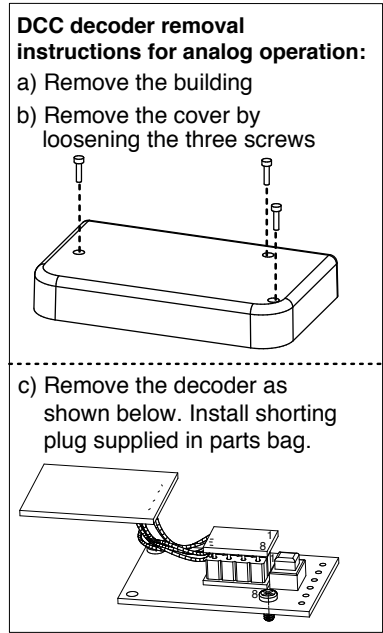
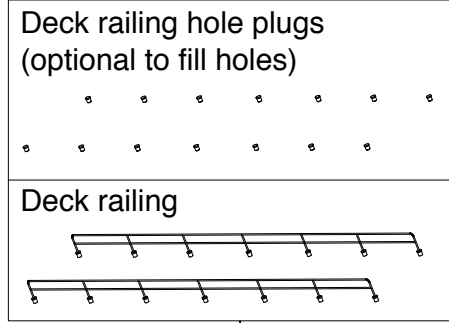


Select decoder address 3 for turntable control or reprogram if desired.

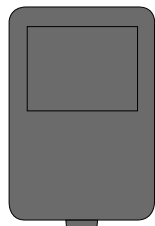
E-Z Command® Control Center with power pack sold separately (#44932)

TO CONVERT DCC TO DC (ANALOG) OPERATION

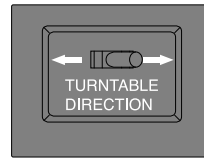
If desired, your DCC-Equipped Turntable can be converted to DC (analog) operation as shown on this sheet. (Separate power sources required for both track and turntable operation as shown)



Wall power pack



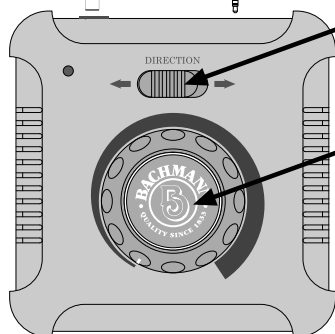
Wider flat plug



(If more length required, use plug-in 10' red power extension wire #44498)

Turntable direction control

Turntable speed control



Speed controller for turntable sold separately (#44211)