

O SCALE
PLASTICVILLE
 U.S.A.®



MOTEL - Item No. 45616

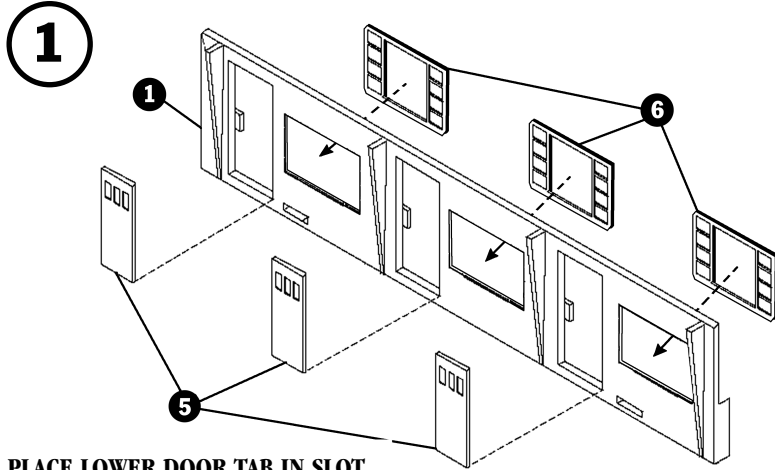
Snap-fit • No glue necessary • Styled after authentic American prototype • Ages 14+

IMPORTANT - BEFORE STARTING:

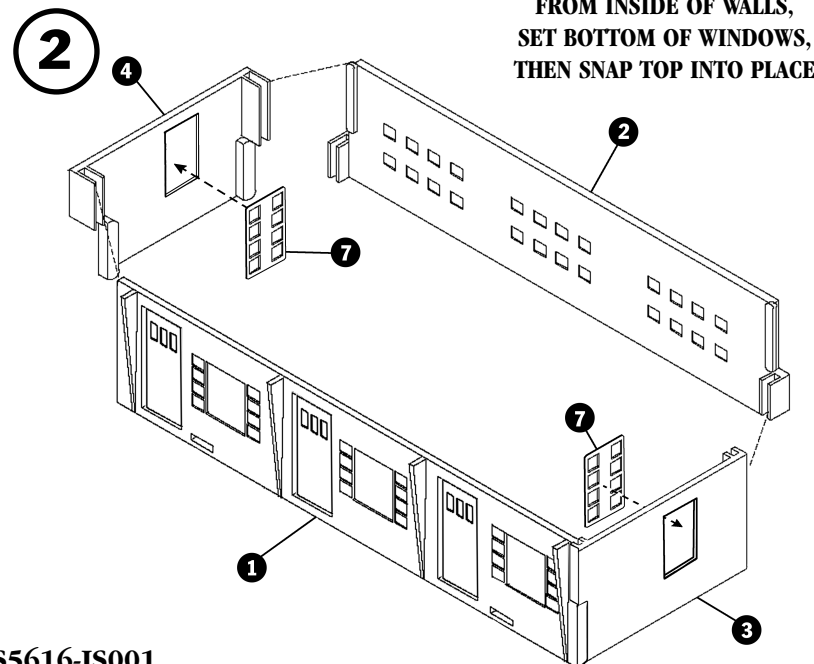
- IF DECALS OR SIGNS ARE INCLUDED, APPLY PRIOR TO ASSEMBLY.
- CHECK CONTENTS AGAINST LIST OF PARTS.
- CAREFULLY TRIM ANY EXCESS PLASTIC FROM THE PARTS BEFORE ASSEMBLING.
- ALTHOUGH NO GLUE IS NECESSARY, YOU MAY ALSO WISH TO ADD A FEW DROPS OF STYRENE CEMENT TO JOINTS FOR PERMANENT CONSTRUCTION.

③ = PART NUMBER

③ = ASSEMBLY SEQUENCE NUMBER



PLACE LOWER DOOR TAB IN SLOT,
 THEN SLIDE UPPER TAB IN PLACE

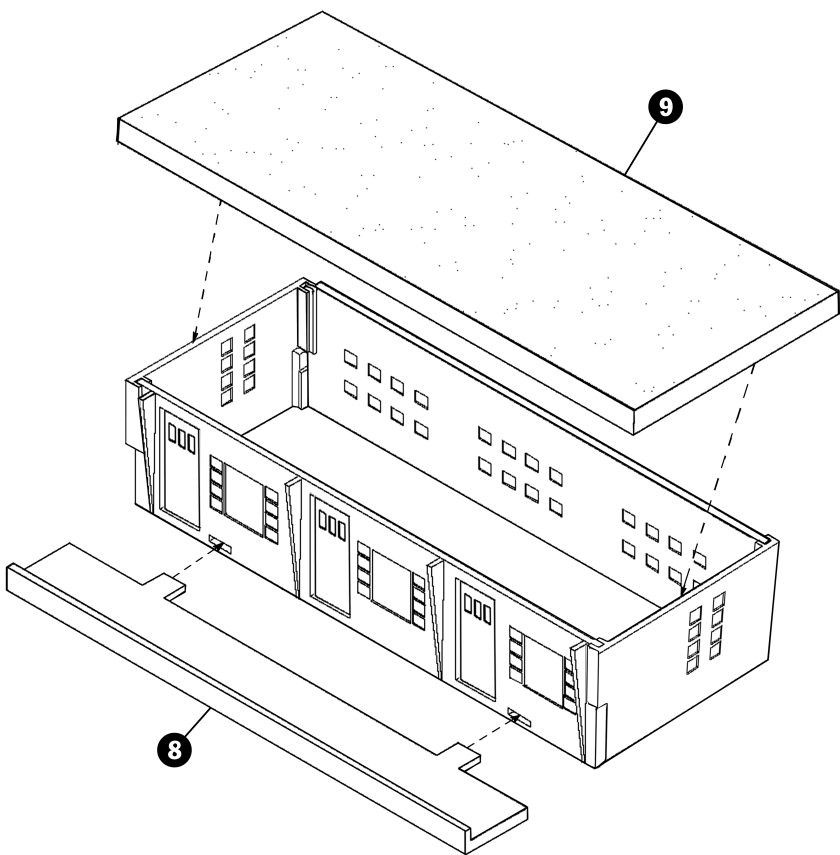


FROM INSIDE OF WALLS,
 SET BOTTOM OF WINDOWS,
 THEN SNAP TOP INTO PLACE

LIST OF PARTS

<u>PART NO.</u>	<u>PART NAME</u>	<u>QTY</u>
1	FRONT WALL	1
2	REAR WALL	1
3	RIGHT SIDE WALL (R)	1
4	LEFT SIDE WALL (L)	1
5	DOORS	3
6	WINDOWS (LARGE)	3
7	WINDOWS (SMALL)	2
8	FRONT WALK	1
9	ROOF	1

3



BACHMANN INDUSTRIES, INC.
1400 EAST ERIE AVENUE
PHILADELPHIA, PA 19124 USA
www.bachmanntrains.com



PRINTED IN CHINA