



HO SCALE PLASTICVILLE U.S.A.®

CATHEDRAL - Item Nos. 45192, 45195

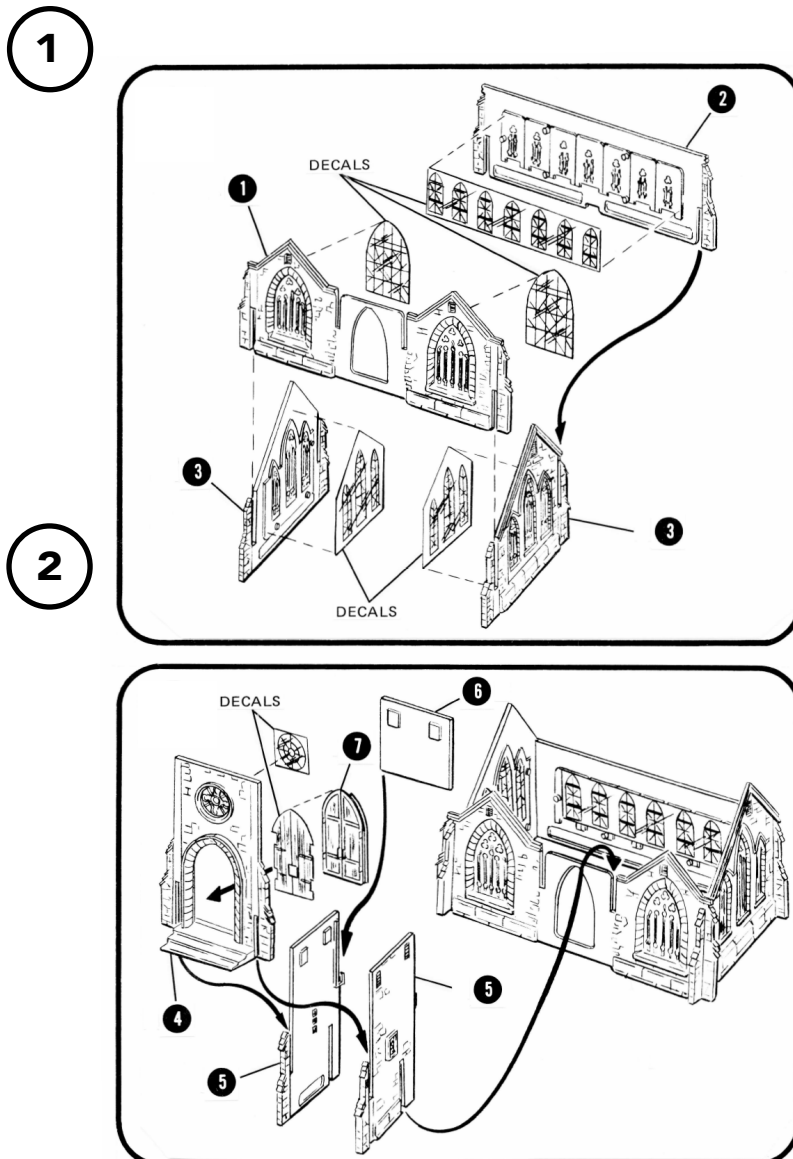
Snap-fit • No glue necessary • Styled after authentic American prototype • Ages 14+

IMPORTANT - BEFORE STARTING:

- If decals or signs are included, apply prior to assembly.
- Check contents against list of parts.
- Carefully trim any excess plastic from the parts before assembling.
- Although no glue is necessary, you may also wish to add a few drops of styrene cement to joints for permanent construction.

③ = PART NUMBER

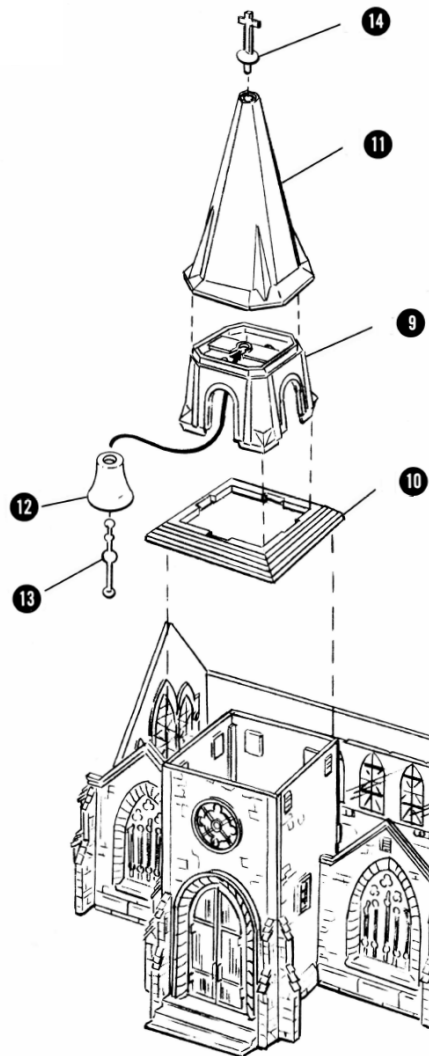
③ = ASSEMBLY SEQUENCE NUMBER



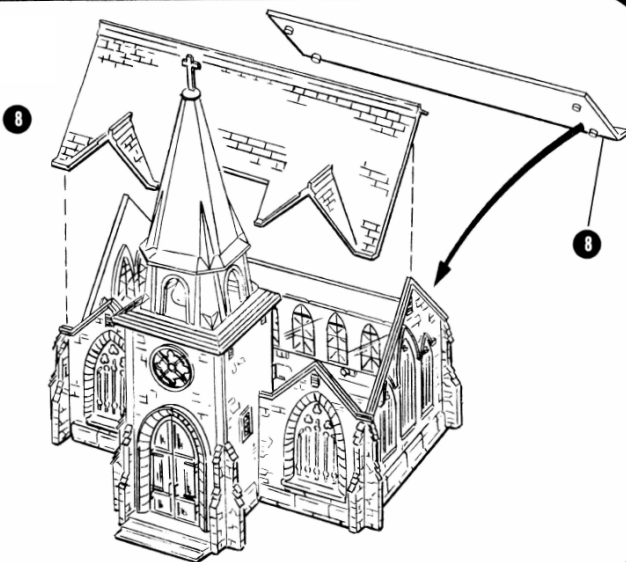
LIST OF PARTS

PART NO.	PART NAME	QTY
1	FRONT WALL	1
2	REAR WALL	1
3	SIDE WALLS	2
4	BELFRY FRONT	1
5	BELFRY SIDES	2
6	BELFRY REAR WALL	1
7	CHURCH DOOR	1
8	SECTIONS OF ROOF	2
9	BELL TOWER	1
10	TOWER MOLDING	1
11	SPIRE	1
12	BELL	1
13	CLAPPER	1
14	CROSS	1
15	DECAL SHEET	1

3



4



BACHMANN INDUSTRIES, INC.
1400 EAST ERIE AVENUE
PHILADELPHIA, PA 19124 USA
www.bachmanntrains.com



PRINTED IN CHINA