

HO SCALE
PLASTICVILLE
 U.S.A.®



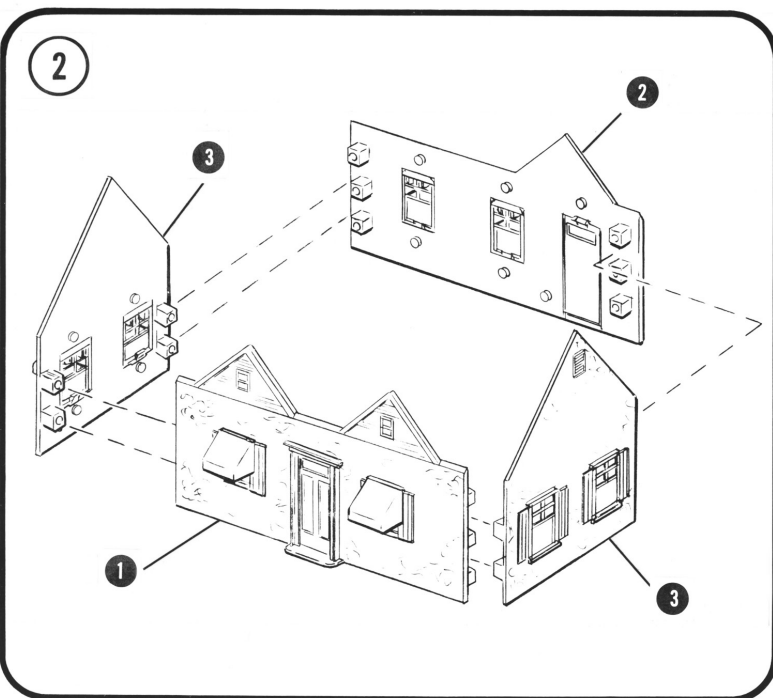
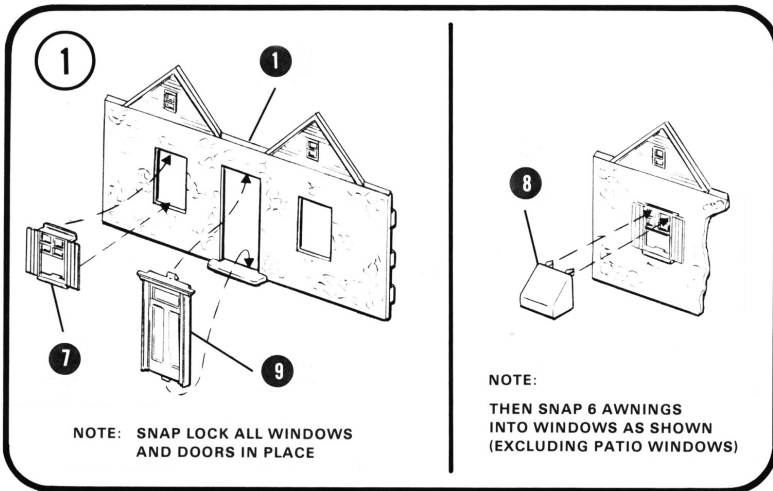
CAPE COD HOUSE - Item No. 45131

Snap-fit • No glue necessary • Styled after authentic American prototype • Ages 14+

IMPORTANT - BEFORE STARTING:

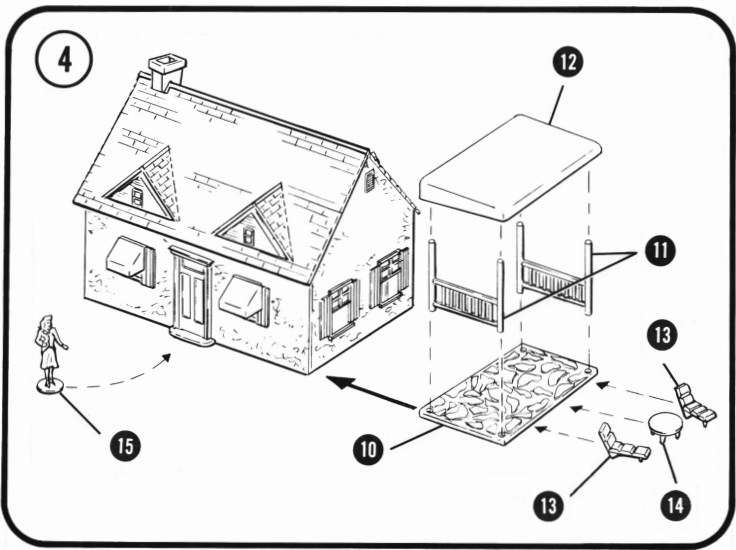
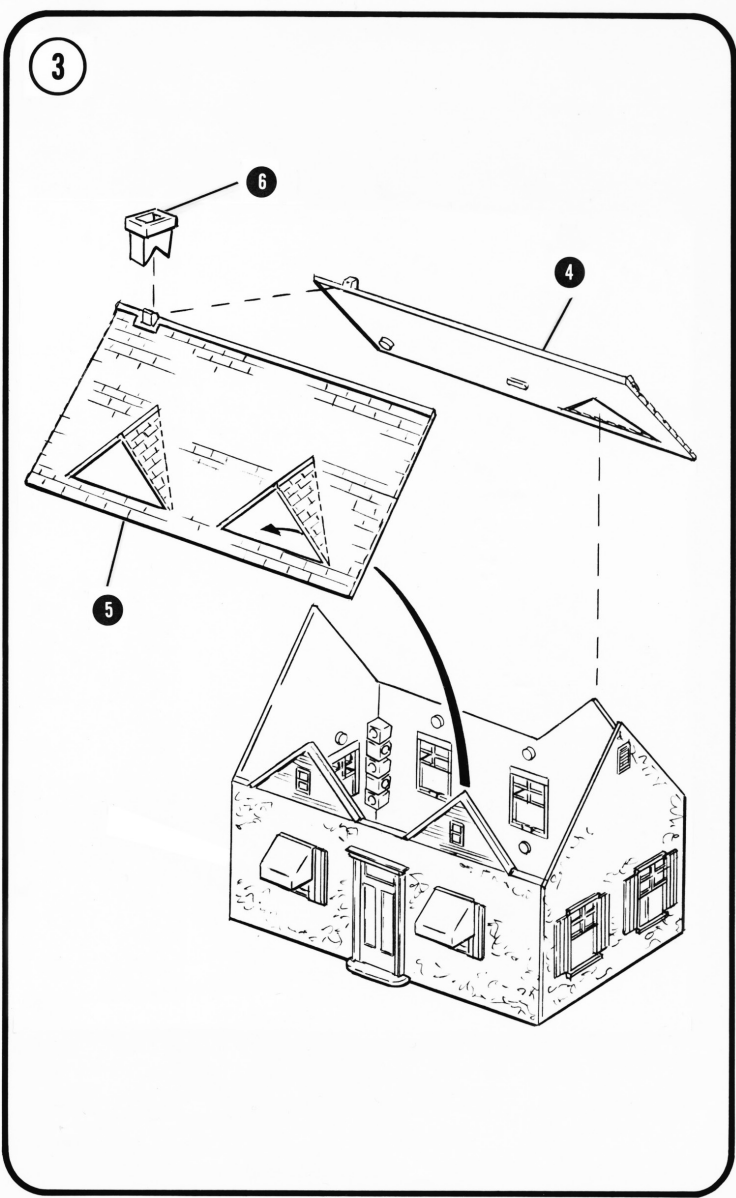
- IF DECALS OR SIGNS ARE INCLUDED, APPLY PRIOR TO ASSEMBLY.
- CHECK CONTENTS AGAINST LIST OF PARTS.
- CAREFULLY TRIM ANY EXCESS PLASTIC FROM THE PARTS BEFORE ASSEMBLING.
- ALTHOUGH NO GLUE IS NECESSARY, YOU MAY ALSO WISH TO ADD A FEW DROPS OF STYRENE CEMENT TO JOINTS FOR PERMANENT CONSTRUCTION.

③ = PART NUMBER ③ = ASSEMBLY SEQUENCE NUMBER



LIST OF PARTS

PART NO.	PART NAME	QTY
1	FRONT WALL	1
2	REAR WALL	1
3	SIDE WALLS	2
4	REAR ROOF	1
5	FRONT ROOF	1
6	CHIMNEY	1
7	WINDOWS	8
8	AWNINGS (small)	6
9	DOORS	2
10	PATIO BASE	1
11	PATIO RAILINGS	2
12	PATIO AWNING	1
13	CHAISE LOUNGES	2
14	TABLE	1
15	FIGURE	1



BACHMANN INDUSTRIES, INC.
 1400 EAST ERIE AVENUE
 PHILADELPHIA, PA 19124 USA
www.bachmantrains.com



PRINTED IN CHINA